

Series DCS



Two-shell excavation grab

DCS5

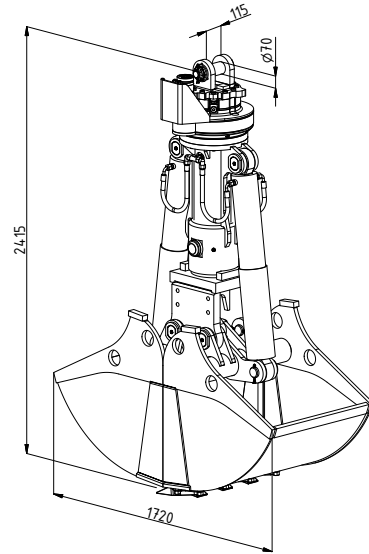
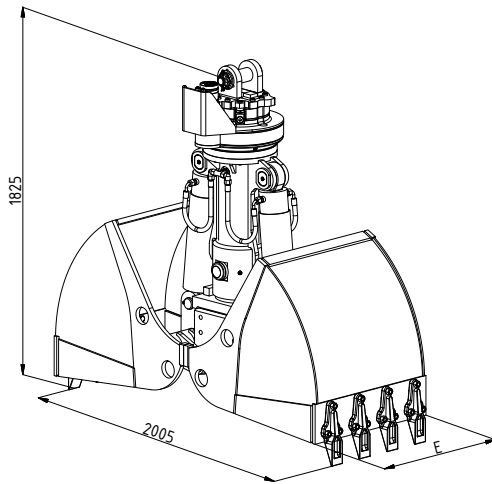
Excavator weight class (t): 22-30

Load bearing capacity (t): Grab:6 / Slewing gear: 15

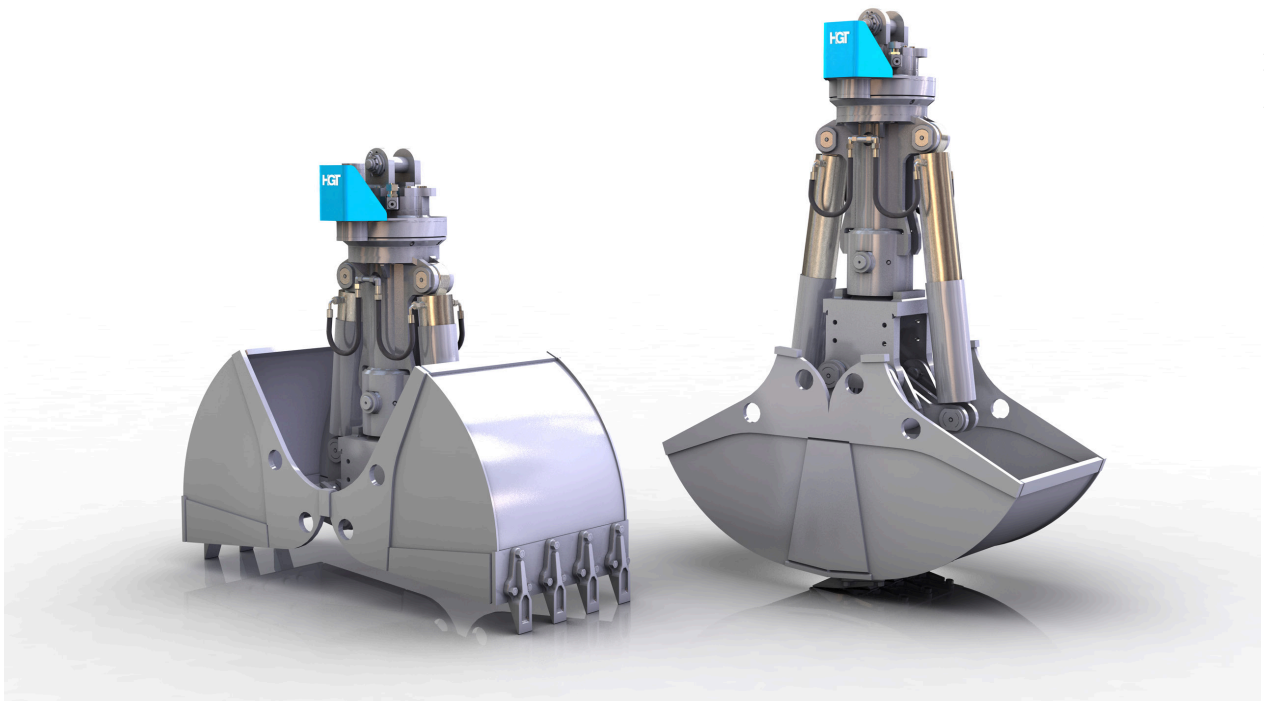
Operating pressure (bar): 350 grabbing / 140 slewing

Bulk weight up to (t/m³): 3

Closing force max. (kN): 100



Type	Capacity - SAE (l)	Weight (kg)	Cutting width E (mm)	Number of teeth
DCS5-400	340	1315	400	3
DCS5-500	430	1370	500	3
DCS5-600	520	1425	600	5
DCS5-800	700	1510	800	7
DCS5-1000	880	1600	1000	9
DCS5-1200	970	1720	1200	11



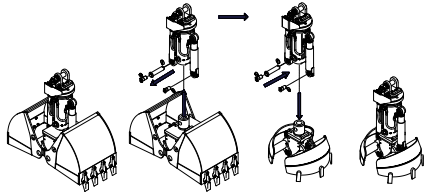
Connecting piece for cardanic grab suspension

Continuously rotatable hydraulic slewing gear

Lubrication points easy to access

Hose protection plate for the hydraulic connections on the slewing gear

Cylinder with joint bearings



The shells and shell carriers are exchangeable with a 3-point plug-in system within the entire series

Cylinder with piston rod protection

Mechanical opening stops

Side and base edges made of high strength fine-grain steel (HB 450)

Synchronized control run

Forged 3-hole screw-on teeth



Special design

Universal grab for typical hydraulic excavator tasks such as excavation and digging natural soil, digging ditches and cable trenches, loading earth, gravel and sand.