

Series DG

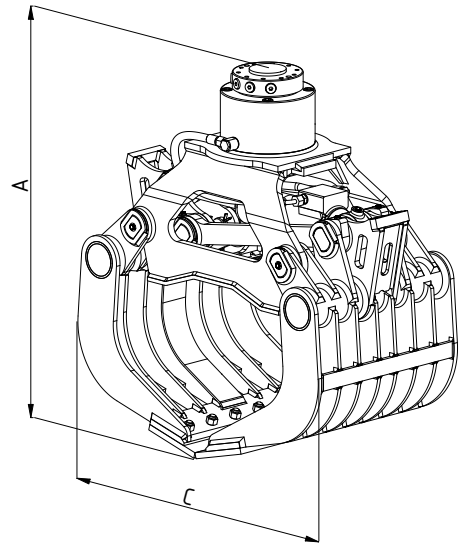
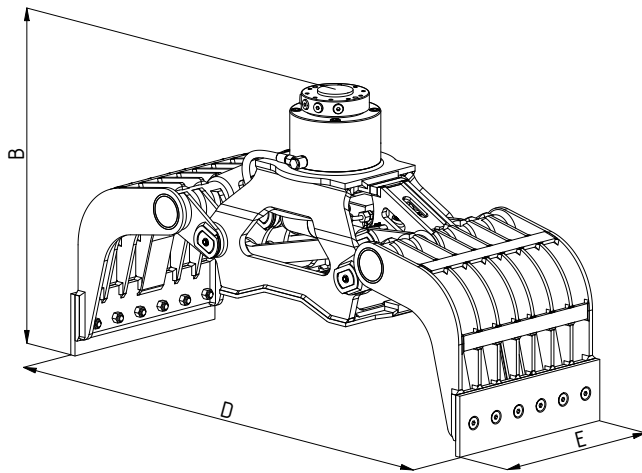


Two-shell demolition grabs

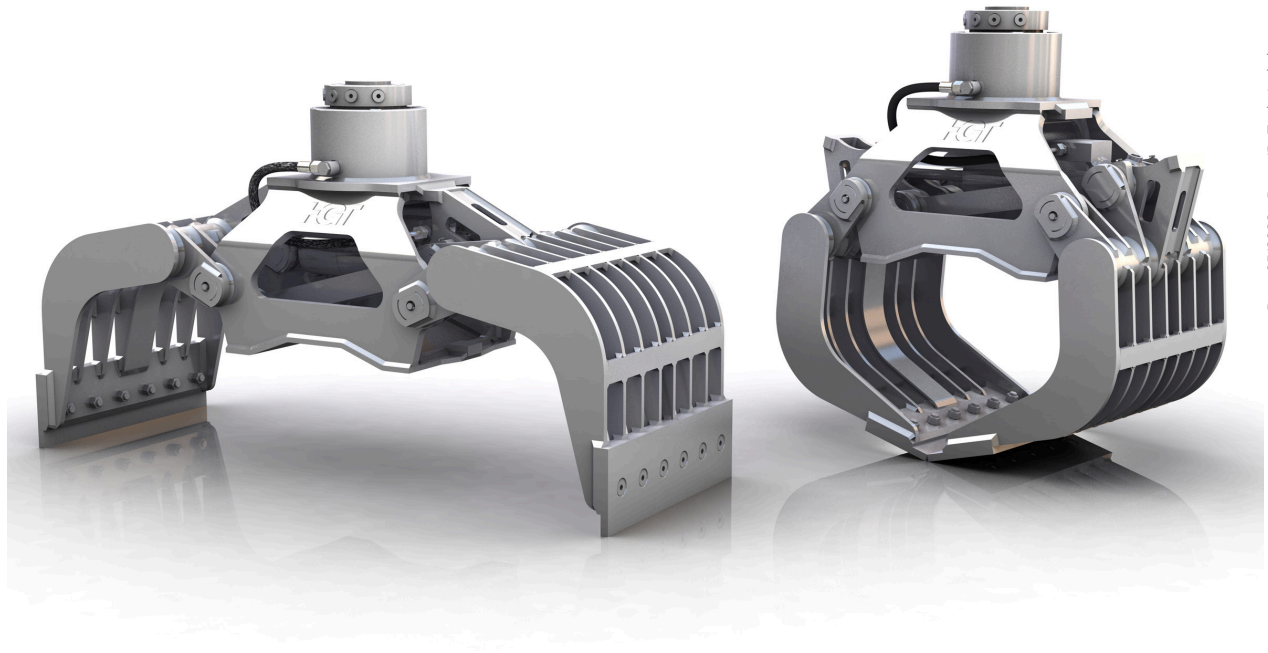
DG1.5

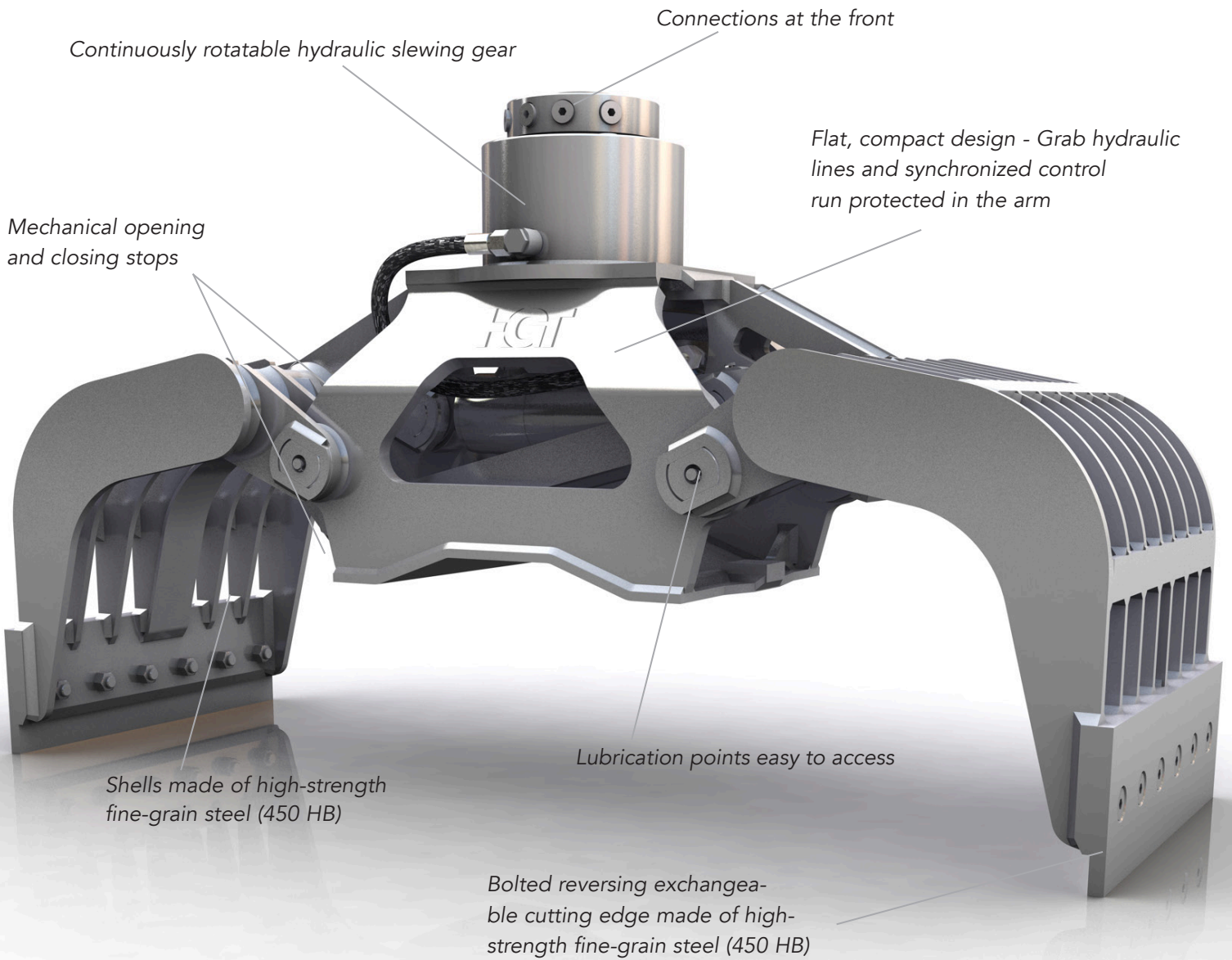
Excavator weight class (t): 4-7
Capacity (l): 130

Operating pressure (bar): 300 grabbing / 250 slewing
Clamping force (kN): 23



Type	Max. grabber load bearing capacity (t)	Load bearing capacity slewing gear max. (t)	Weight without adaptor plate (kg)	Dimensions (mm)				
				A	B	C	D	E
DG1.5	1.5	5	310	930	775	825	1390	500





Multi-use grab for a wide range of set of handling different materials such as demolition, sorting scrap, loading and sorting and recycled materials.