

Series DG

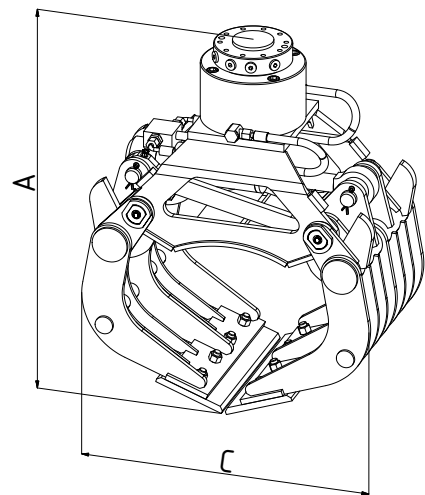
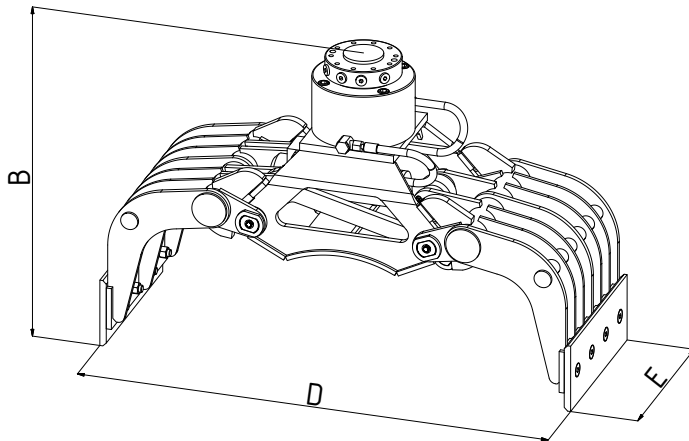


## Two-shell demolition grabs

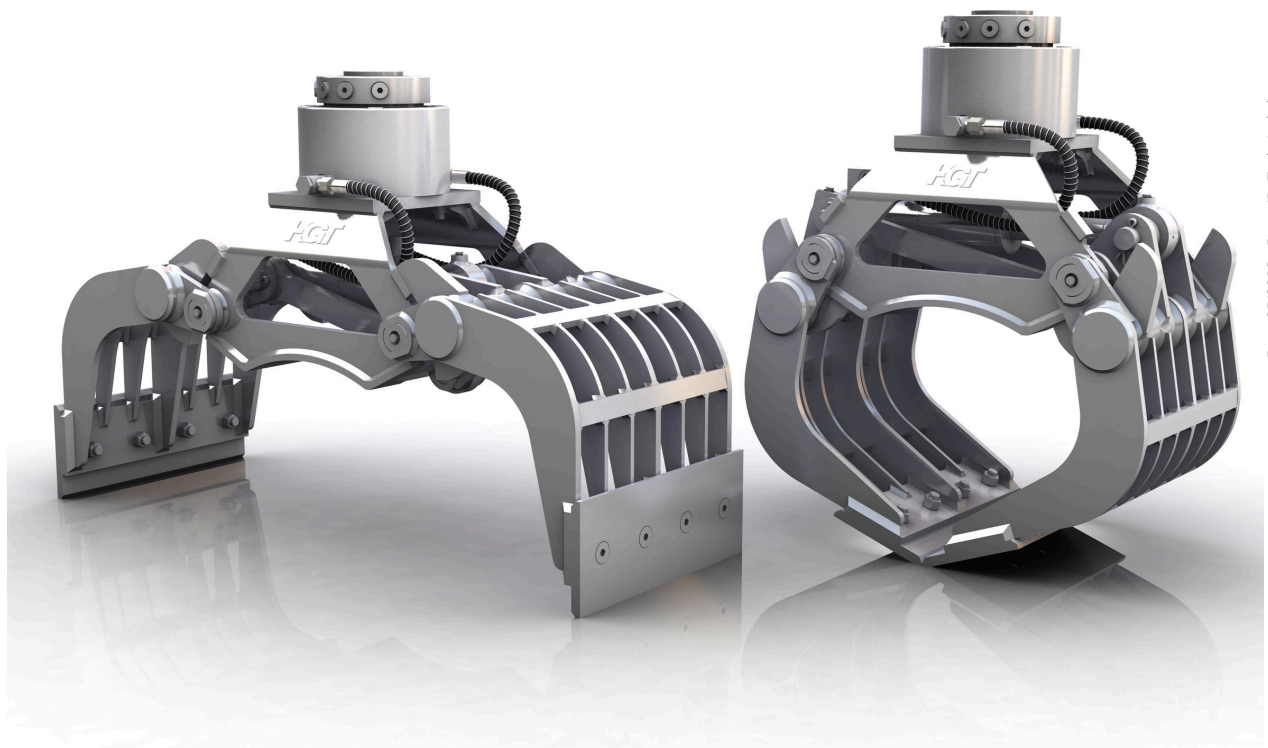
# DG1

Excavator weight class (t): 3-5  
Capacity (l): 80

Operating pressure (bar): 250 grabbing / 250 slewing  
Clamping force (kN): 15



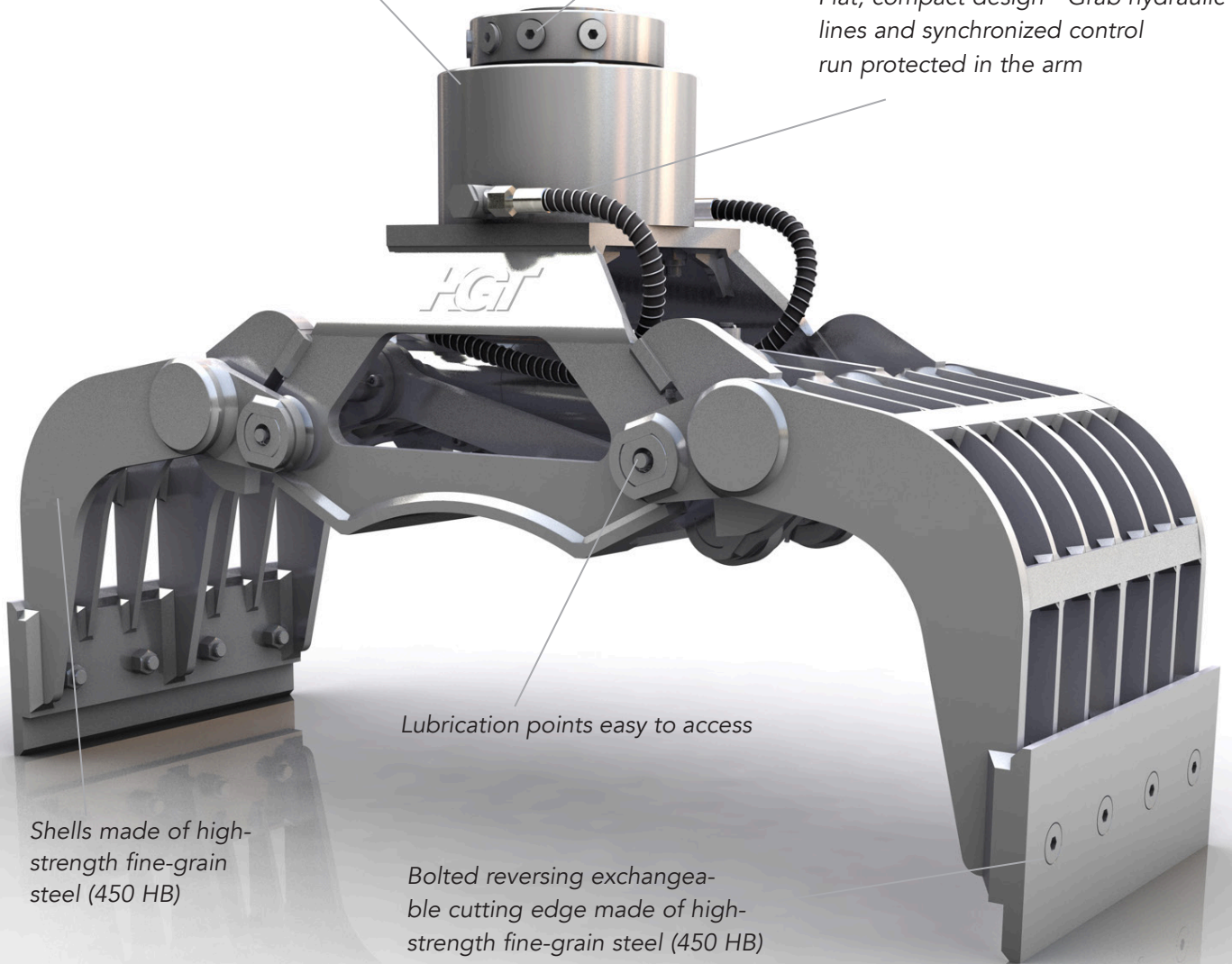
Type	Max. grabber load bearing capacity (t)	Load bearing capacity slewing gear max. (t)	Weight without adaptor plate (kg)	Dimensions (mm)				
				A	B	C	D	E
DG1	1	5	190	760	700	660	1105	400



Continuously rotatable hydraulic slewing gear

Connections at the front

Flat, compact design - Grab hydraulic lines and synchronized control run protected in the arm



Lubrication points easy to access

Shells made of high-strength fine-grain steel (450 HB)

Bolted reversing exchangeable cutting edge made of high-strength fine-grain steel (450 HB)



Multi-use grab for a wide range of set of handling different materials such as demolition, sorting scrap, loading and sorting and recycled materials.