

Series DW



Hydraulic slewing gear

DW3.6

Weight (kg): 272

max. axial load bearing capacity (t): 18

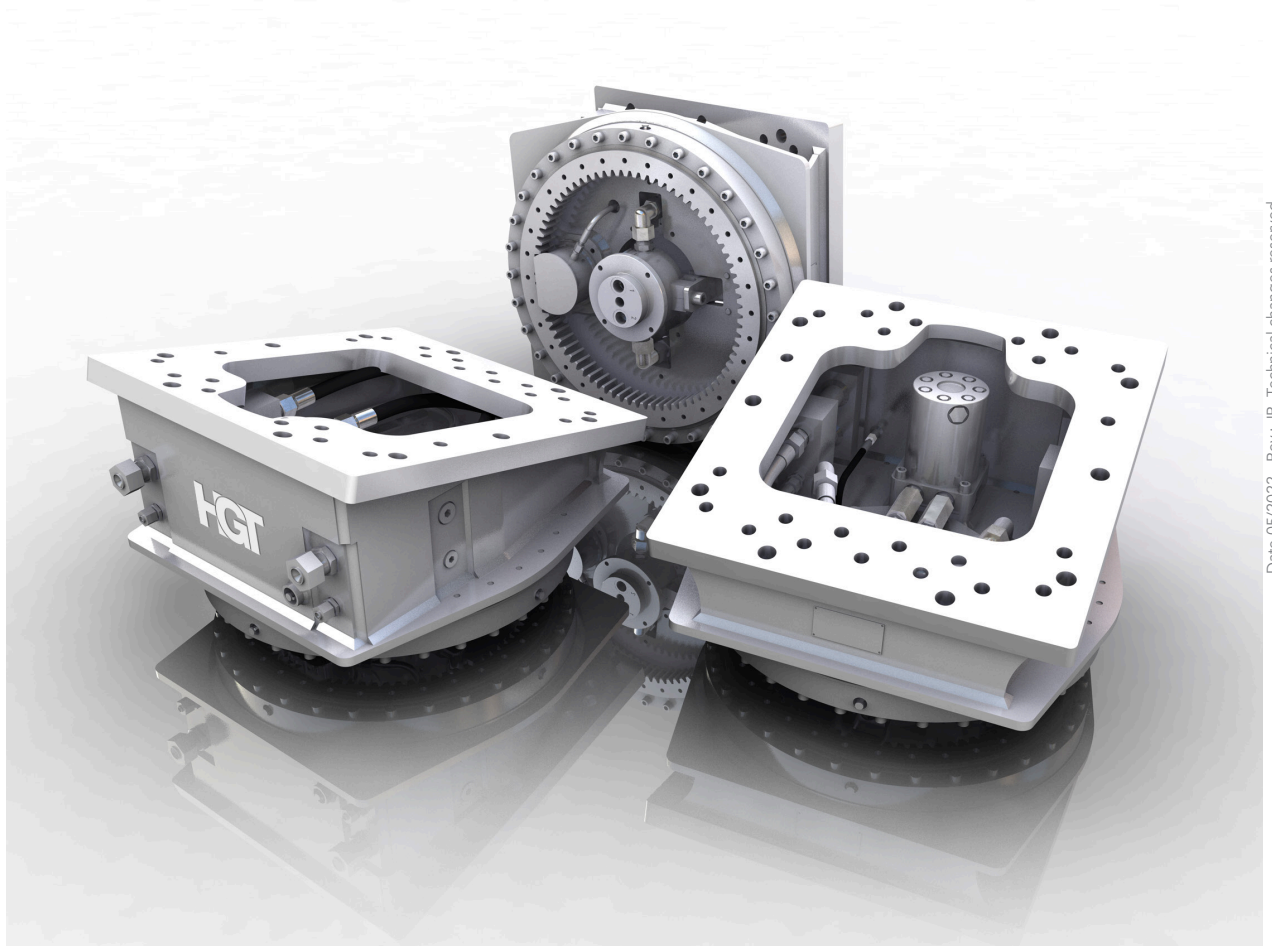
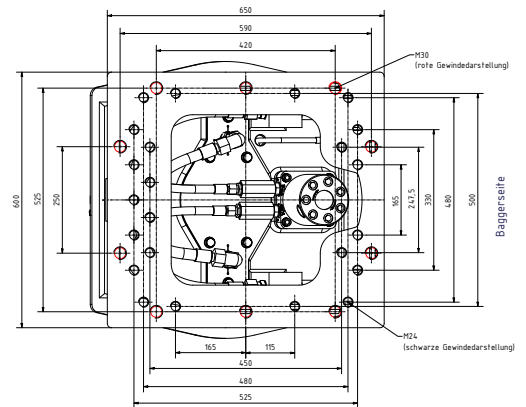
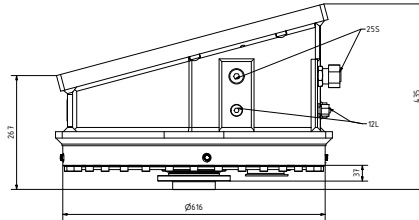
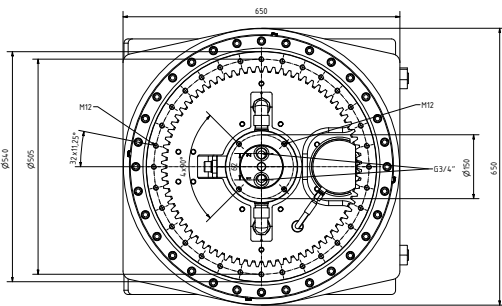
max. radial load bearing capacity (t): 12

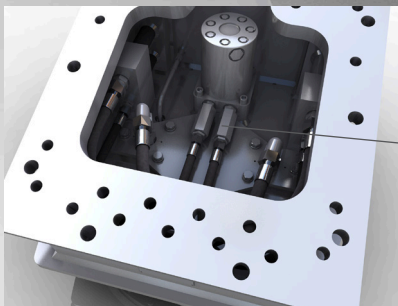
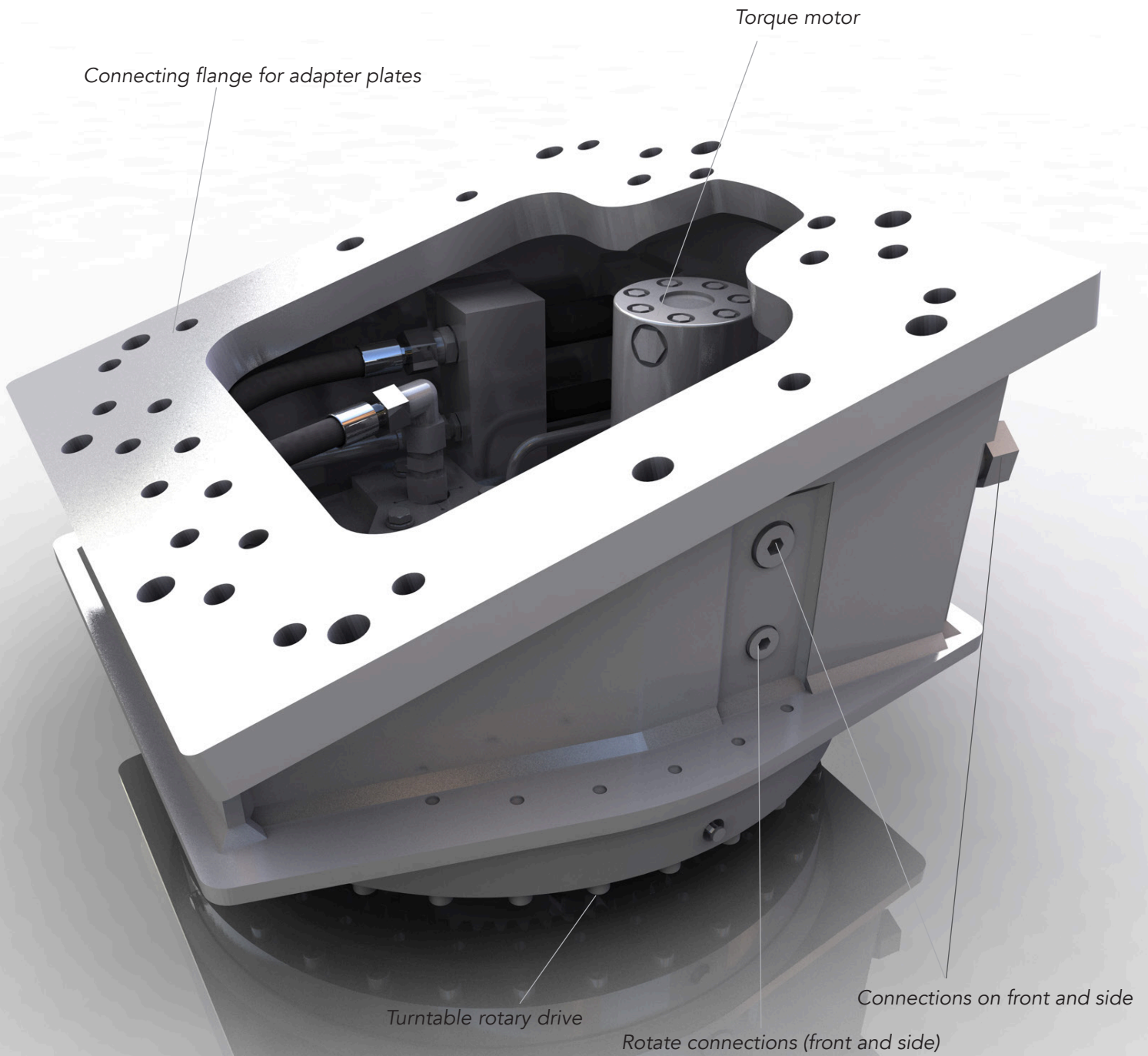
Carrying capacity (kN): 180

Torque (140bar) (Nm): 2551

Speed max. (rpm): 20

Operating pressure max. (bar): 350 Rotating union /
140 Rotary function





Flow control valves
(Control the speed of rotation)



The DW3.6 slewing gear has been designed for use on hydraulic attachments for hydraulic excavators, as well as for mobile and stationary handling machines. The DW3.6 takes over three functions for the operation of the attachment:

1. Endless hydraulic rotary drive
2. Hydraulic rotary union
3. axial as well as radial support of the attachment in rotary operation