

Series DW

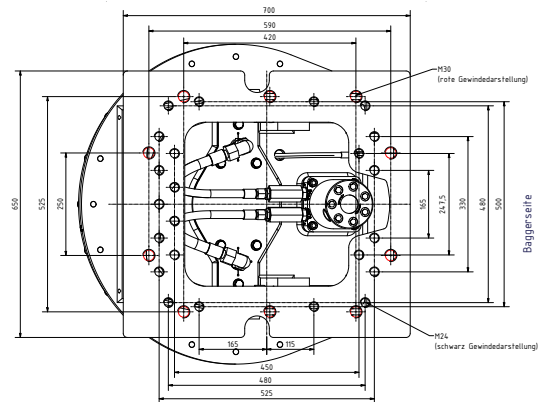
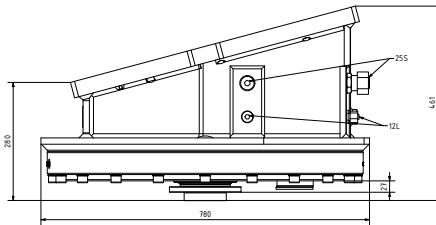
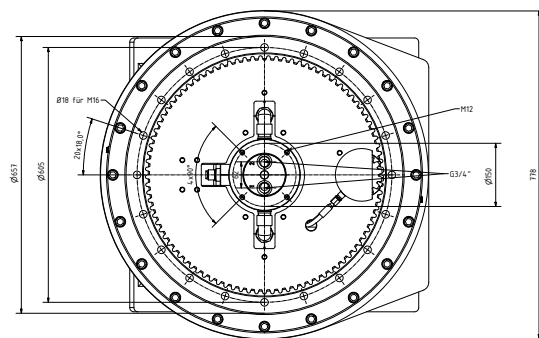


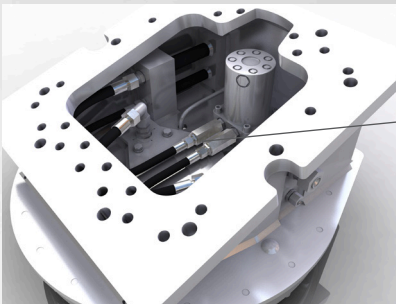
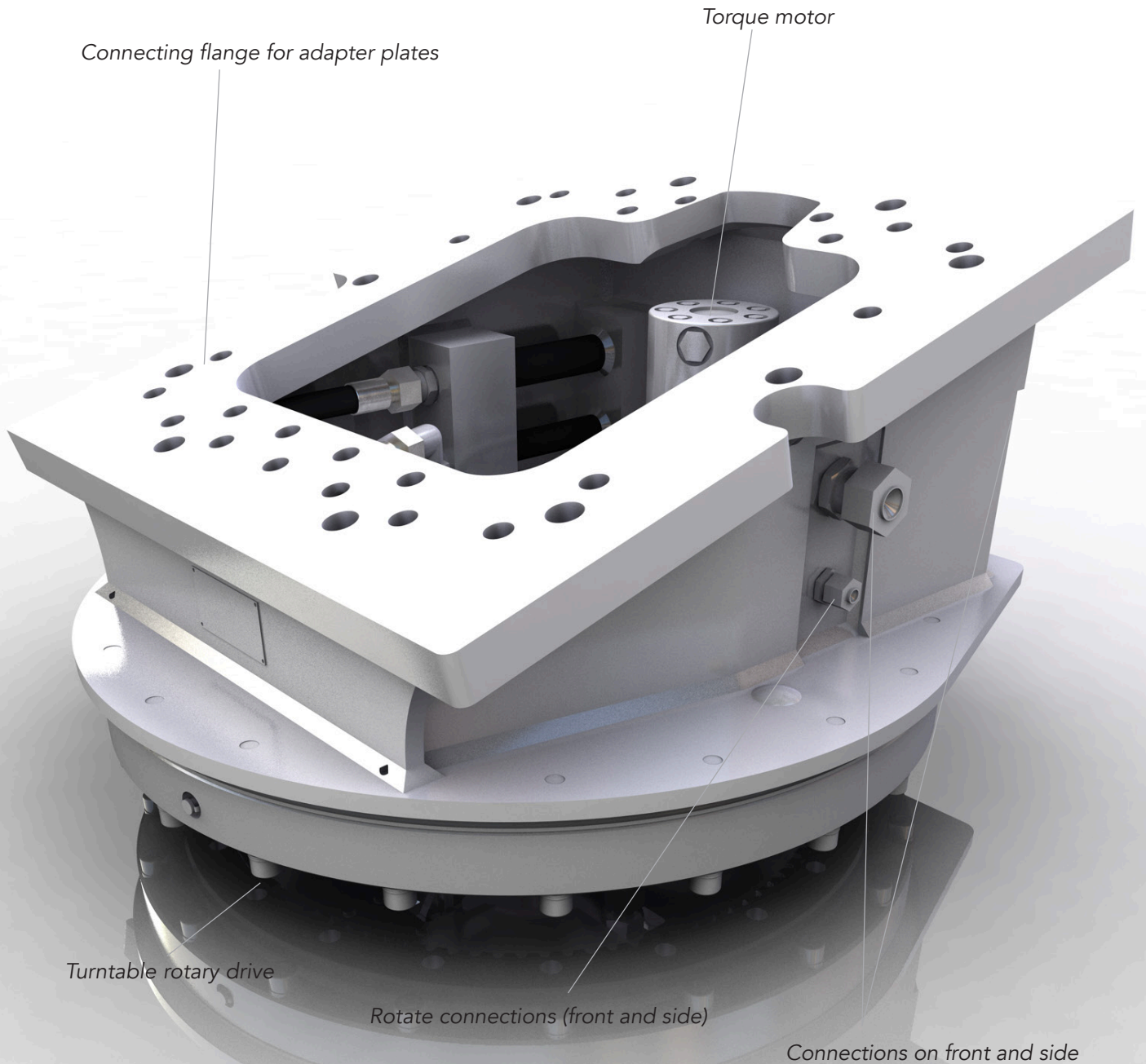
Hydraulic slewing gear

DW4.6

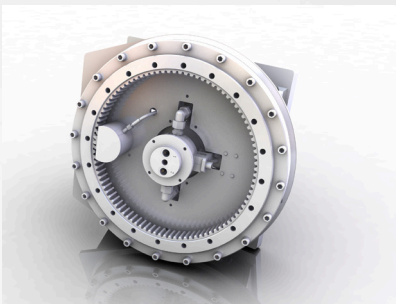
Weight (kg): 342
max. axial load bearing capacity (t): 30
max. radial load bearing capacity (t): 20
Carrying capacity (kN): 200

Torque (140bar) (Nm): 2914
Speed max. (rpm): 17
Operating pressure max. (bar): 350 Rotating union /
140 Rotary function





Flow control valves
(Control the speed of rotation)



The DW4.6 slewing gear has been designed for use on hydraulic attachments for hydraulic excavators, as well as for mobile and stationary handling machines. The DW4.6 takes over three functions for the operation of the attachment:

1. Endless hydraulic rotary drive
2. Hydraulic rotary union
3. axial as well as radial support of the attachment in rotary operation