

Series DW



Hydraulic slewing gear

DW7

Weight (kg): 694

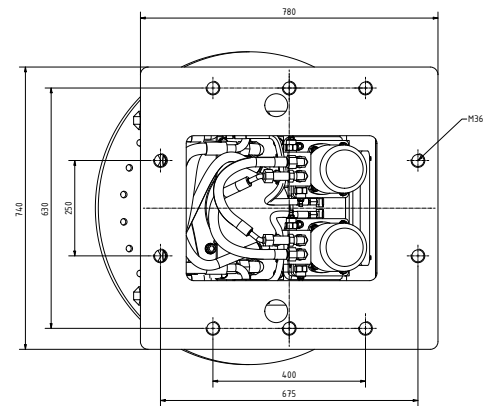
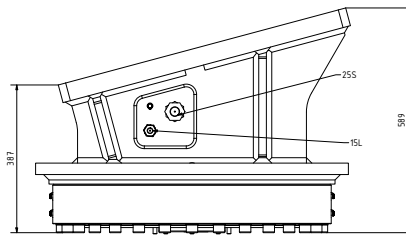
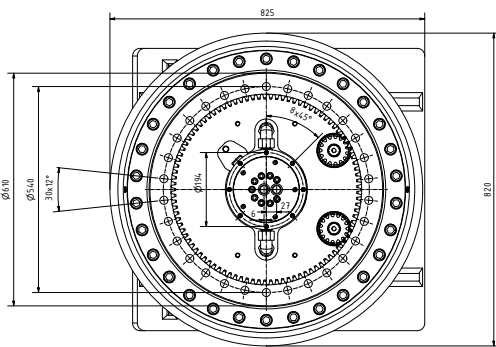
max. axial load bearing capacity (t): 30

Carrying capacity (kN): 300

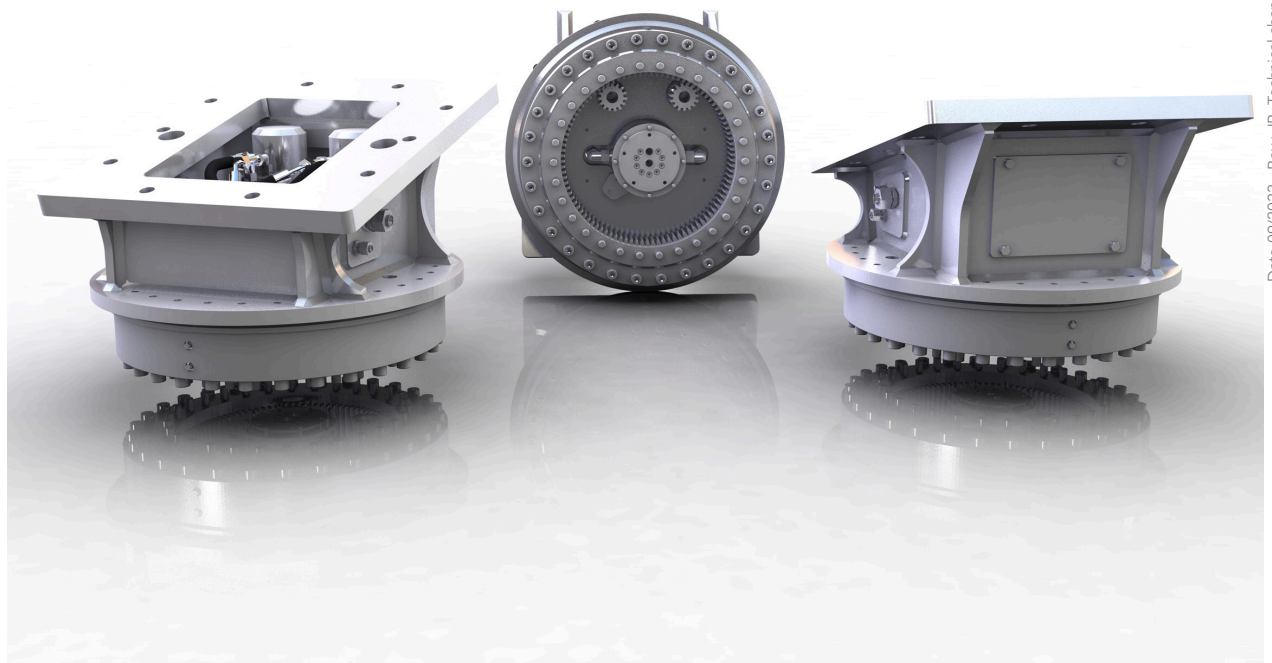
Torque (100bar) (Nm): 10864

Speed max. (rpm): 10

Operating pressure max. (bar): 350 Rotating union /
140 Rotary function



Baggersseite



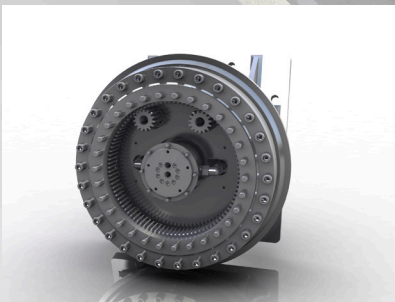
Connecting flange for adapter plates

Torque motor

Connections on the side

Turntable rotary drive

Connections for slewing



The DW7 slewing gear has been designed for use on hydraulic attachments for hydraulic excavators, as well as for mobile and stationary handling machines. The DW7 takes over three functions for the operation of the attachment:

1. Endless hydraulic rotary drive
2. Hydraulic rotary union
3. axial as well as radial support of the attachment in rotary operation