

Series DWP



Hydraulic slewing gear

DWP15

Weight (kg): 228

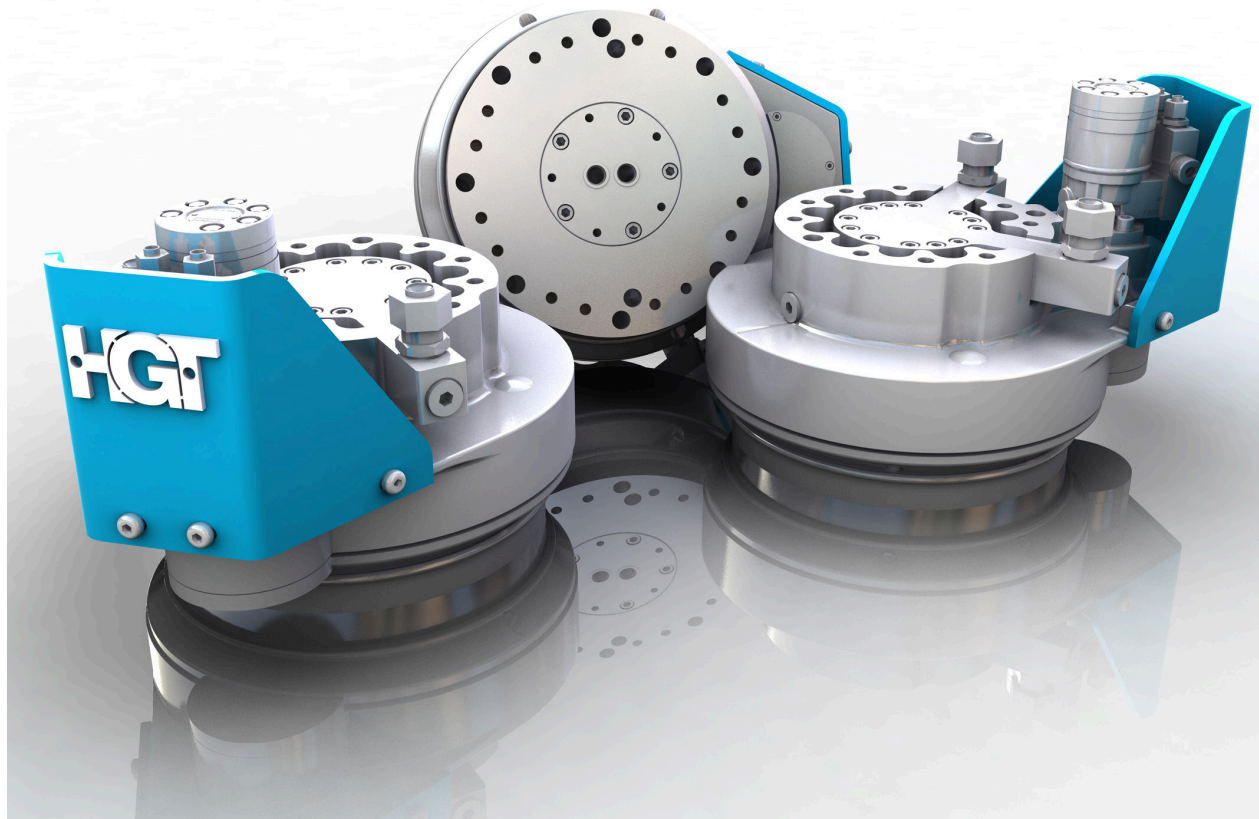
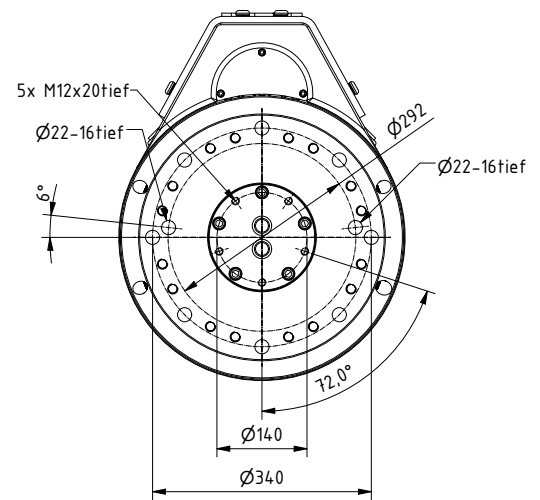
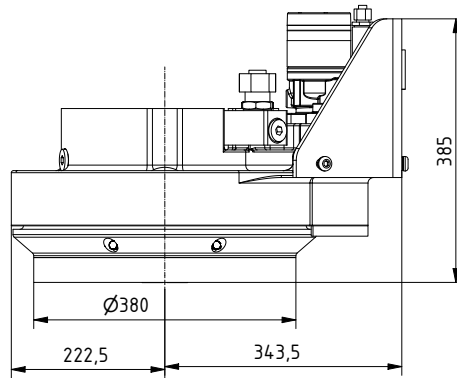
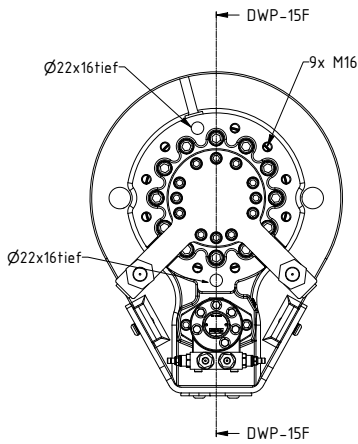
max. axial static load bearing capacity (t): 15

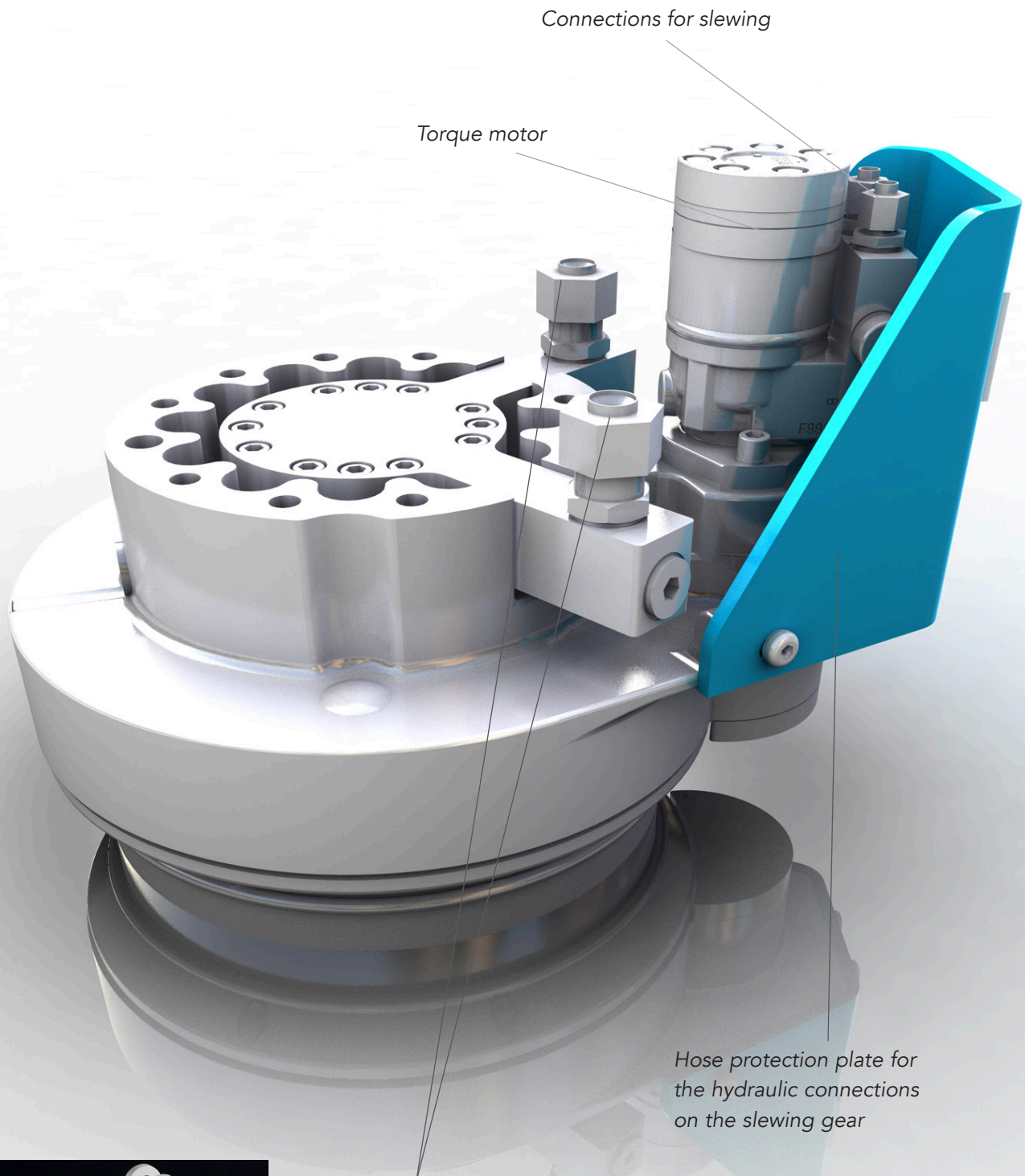
max. axial dynamic load bearing capacity (t): 8

Torque (140bar) (Nm): 2789

Speed max. (rpm): 15

Operating pressure max. (bar): 350 Rotating union /
140 Rotary function





Connections for slewing

Torque motor

Hose protection plate for the hydraulic connections on the slewing gear

Open/close the connections



The DWP-15 slewing gear has been designed for use on hydraulic attachments for hydraulic excavators, as well as for mobile and stationary handling machines. The DWP-15 takes over three functions for the operation of the attachment:

1. Endless hydraulic rotary drive
2. Hydraulic rotary union
3. axial as well as radial support of the attachment in rotary operation