

Series MP

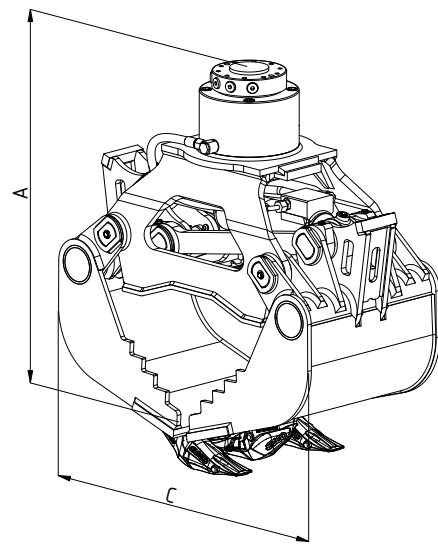
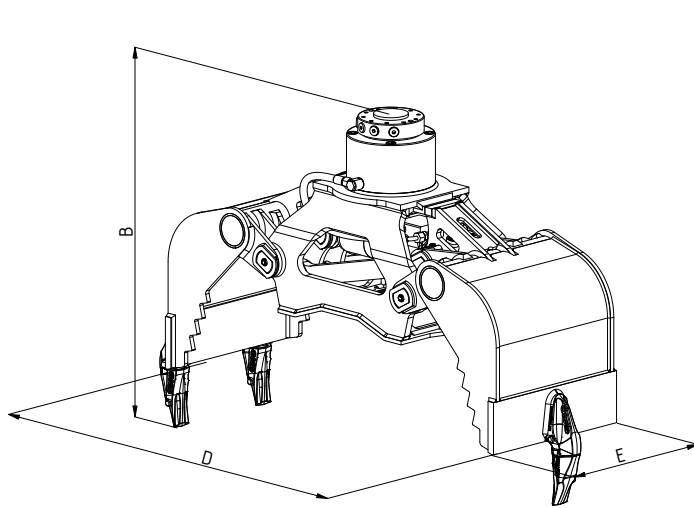


Two-shell universal grabs

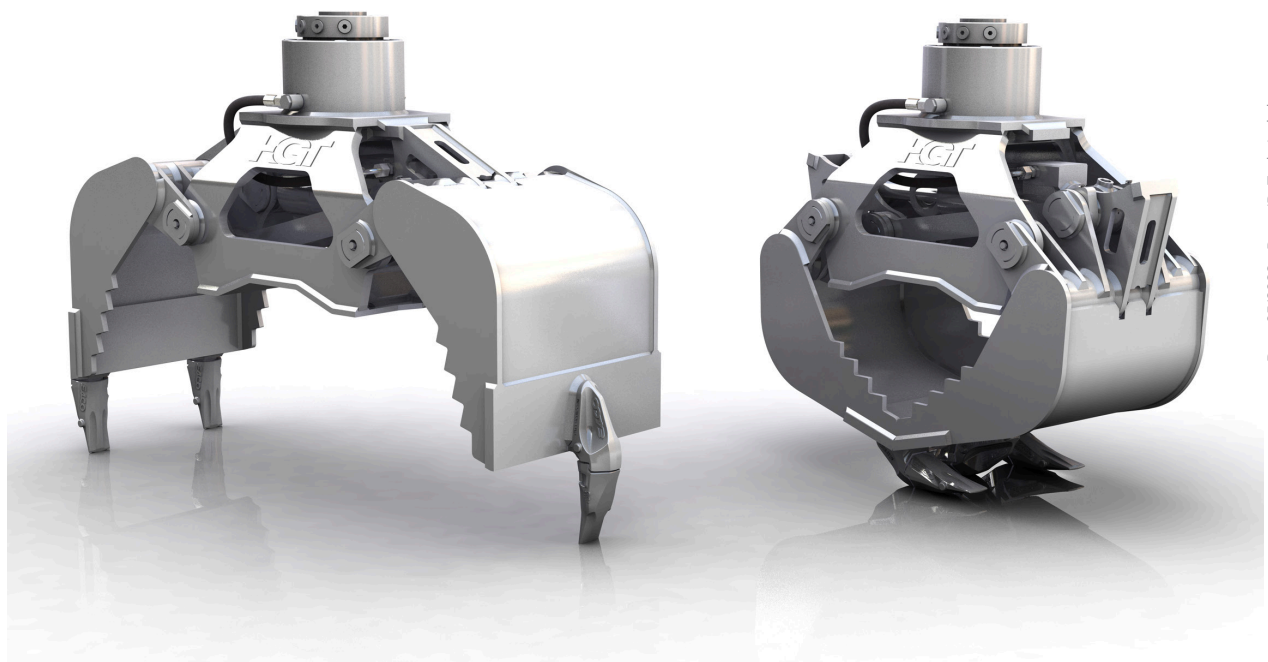
MP1.5

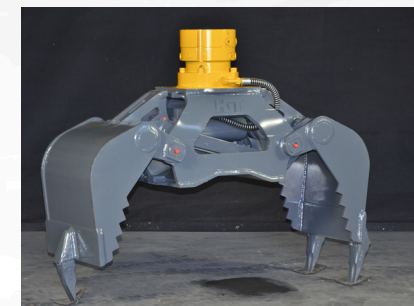
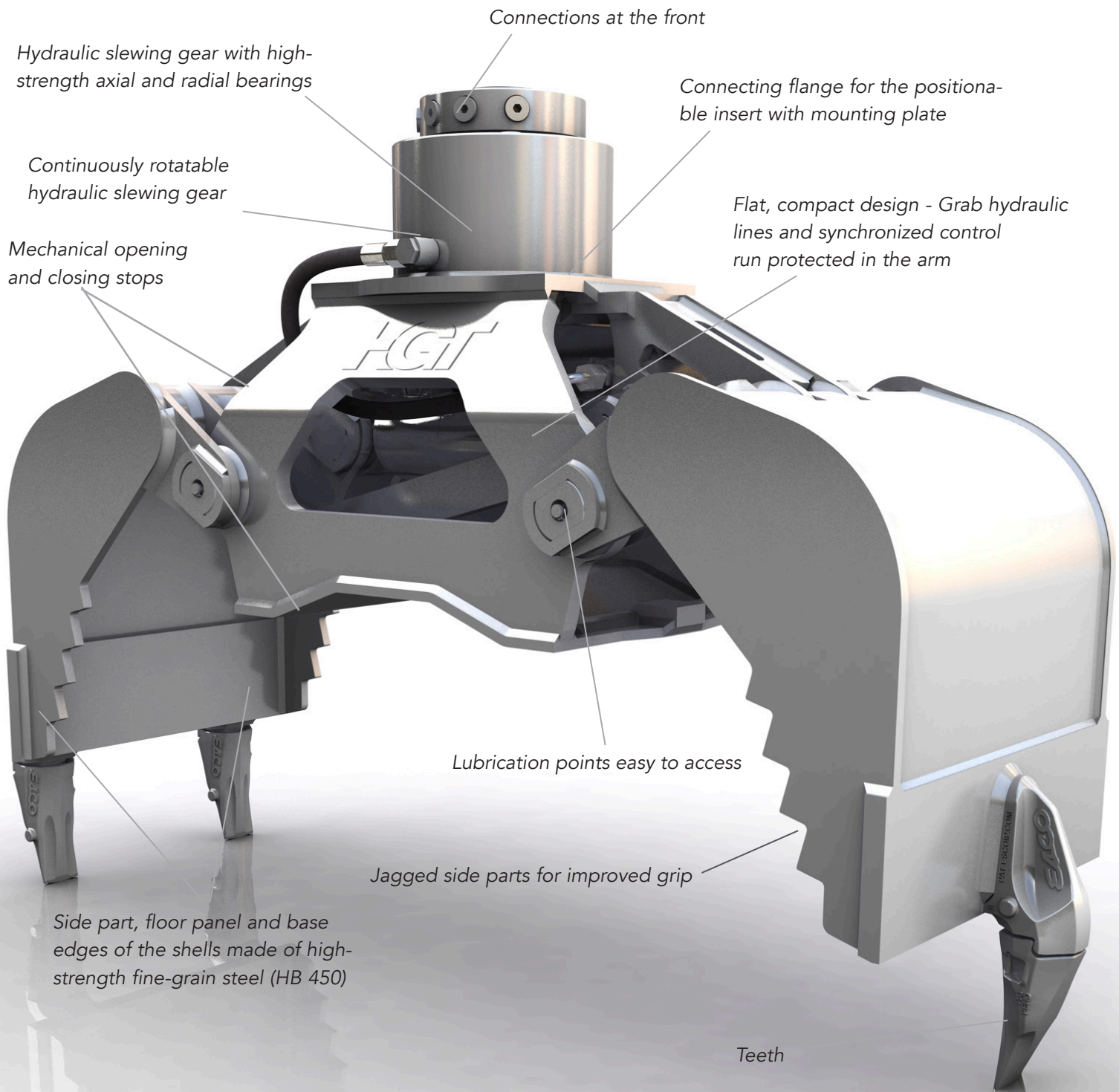
Excavator weight class (t): 4-7
Capacity (l): 90

Operating pressure (bar): 300 grabbing / 250 slewing
Clamping force (kN): 28



Type	Max. grabber load bearing capacity (t)	Load bearing capacity slewing gear max. (t)	Weight without adapter plate (kg)	Number of teeth	Dimensions (mm)				
					A	B	C	D	E
MP1.5	1.5	5	270	3	900	920	800	1330	450





Multi-use grab for a wide range of applications for handling different materials such as stone-setting tasks, sorting construction scrap, loading and sorting recycling materials, earth excavation and loading course bulk goods, loading bushes and shrubs.