

Series MP

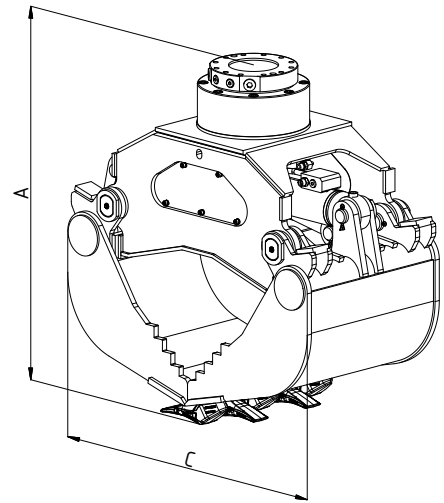
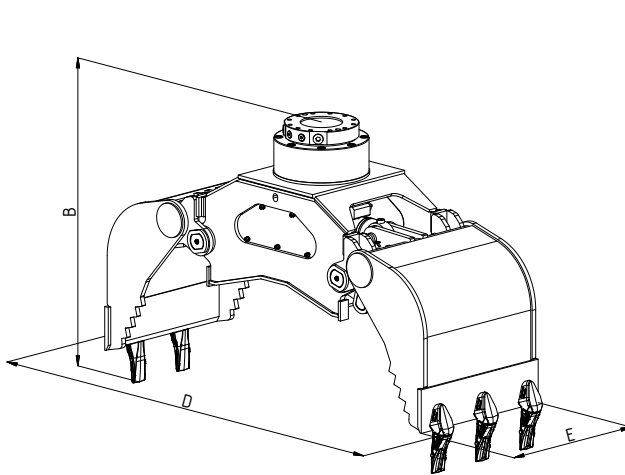


Two-shell universal grabs

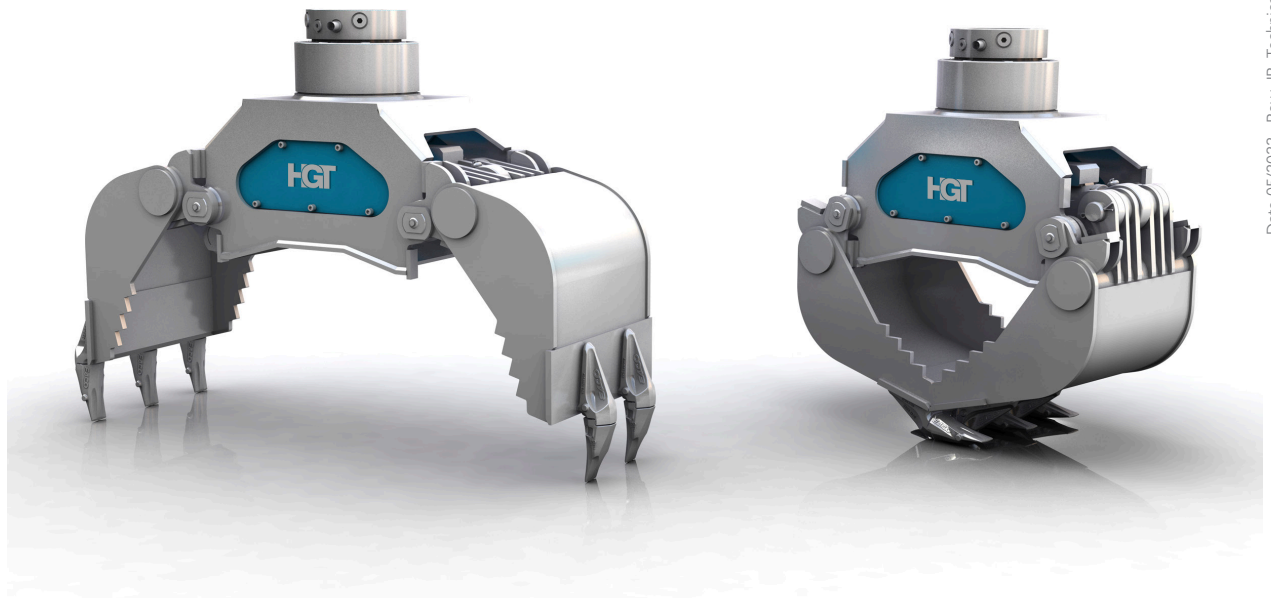
MP2

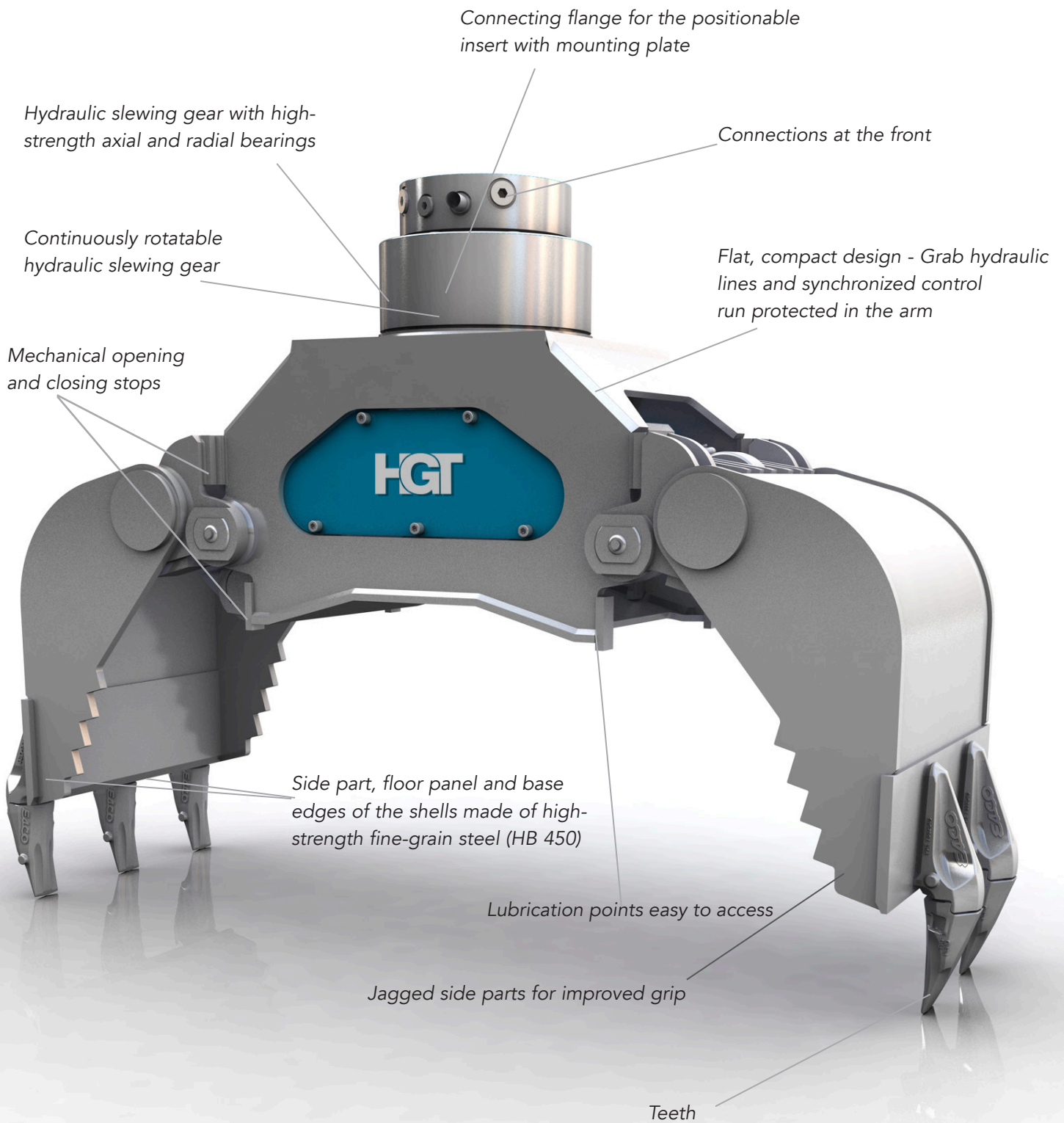
Excavator weight class (t): 5-9
Capacity (l): 120

Operating pressure (bar): 300 grabbing / 250 slewing
Clamping force (kN): 37



Type	Max.grabber load bearing capacity (t)	Load bearing capacity slewing gear max. (t)	Weight without adapter plate (kg)	Number of teeth	Dimensions (mm)				
					A	B	C	D	E
MP2	2	10	440	5	1020	1080	900	1530	500





Multi-use grab for a wide range of applications for handling different materials such as stone-setting tasks, sorting construction scrap, loading and sorting recycling materials, earth excavation and loading coarse bulk goods, loading bushes and shrubs.