

Series MT

Orange loading grab

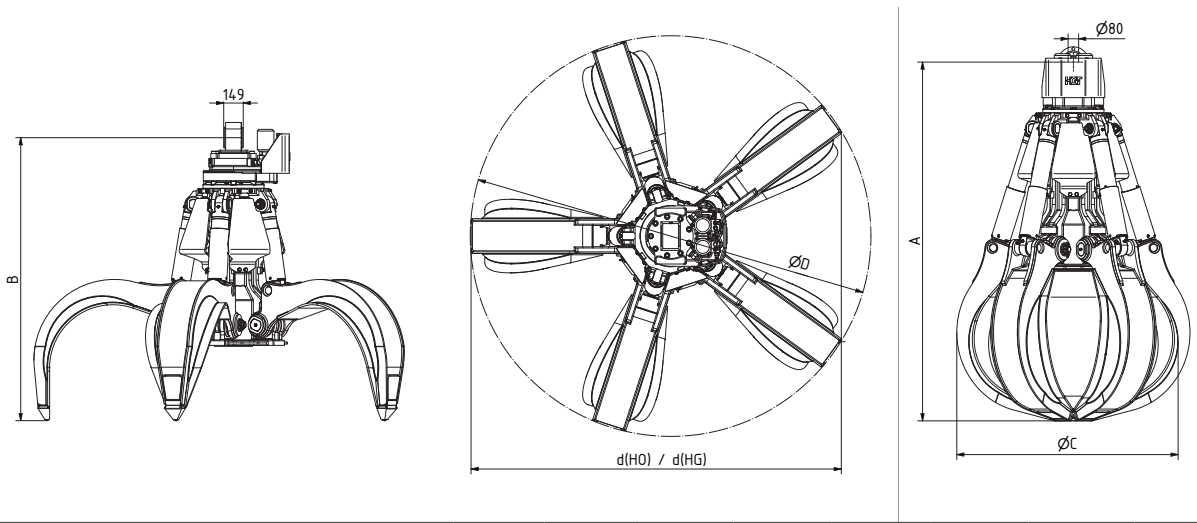
MT5.7-5



Excavator weight class (t): 55-70

Operating pressure (bar): 350 grabbing / 140 slewing

Load bearing capacity (t): Grab: 10 / Slewing gear: 26 Speed (rpm): 15



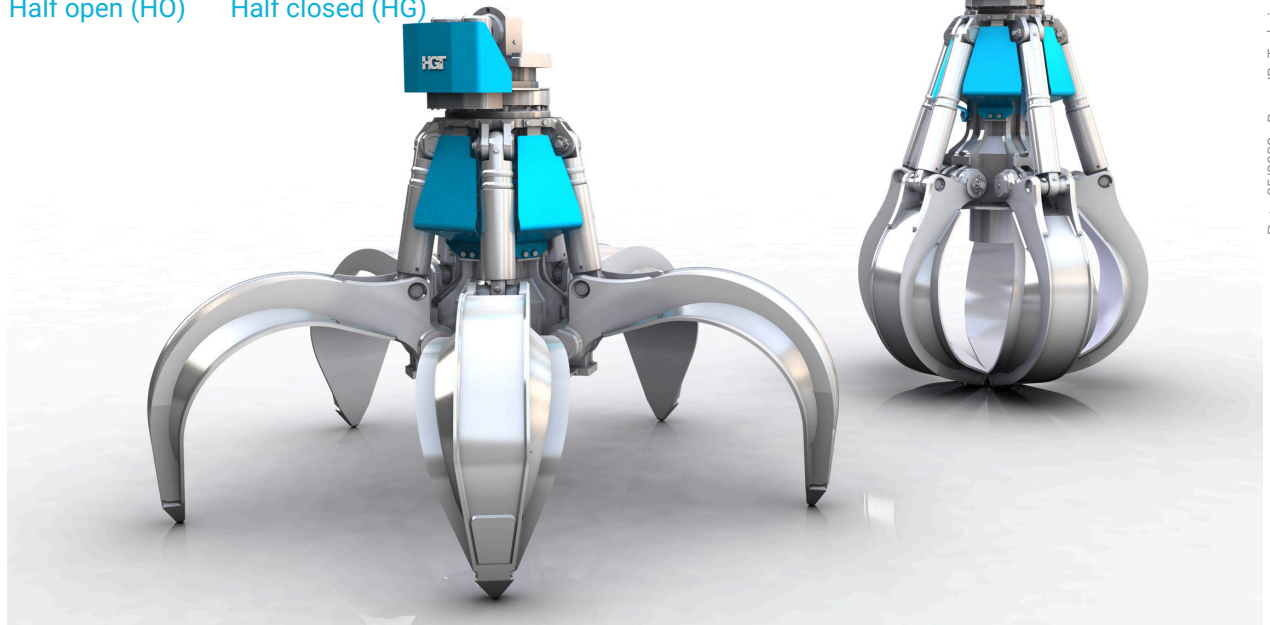
Type	Capacity (l)	Weight (kg)		Dimensions (mm)					
		HO	HG	A	B	C	D	d(HO)	d(HG)
MT5.7-1250-5	1250	2963	3129	2731	2153	1800	3050	2820	2867
MT5.7-1500-5	1500	3131	3306	2784	2172	2000	3200	2983	3034
MT5.7-3000-5	3000	3754	3964	3172	2303	2360	3900	3611	3672



Half open (HO)



Half closed (HG)



Connecting piece for cardanic grab suspension

Continuously rotatable hydraulic slewing gear

Hose protection plate for the hydraulic connections on the slewing gear

Hose protection plate

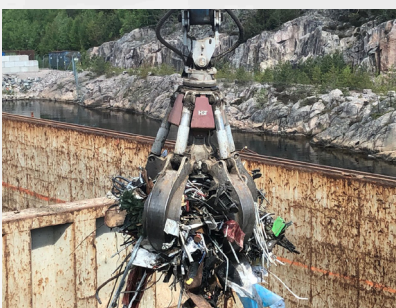
Lifting cylinder with dampened end position

Piston rod protection

Sealed, large-surface shell rivet point bearings

The shells are exchangeable within the entire series and made completely of HB 450

Shell tips made of manganese steel



Special handling and sorting grab for large and bulky material such as found in quarries, scrap sorting, waste and recycling facilities. Available as 4 and 5 arm version.