

Series OQC

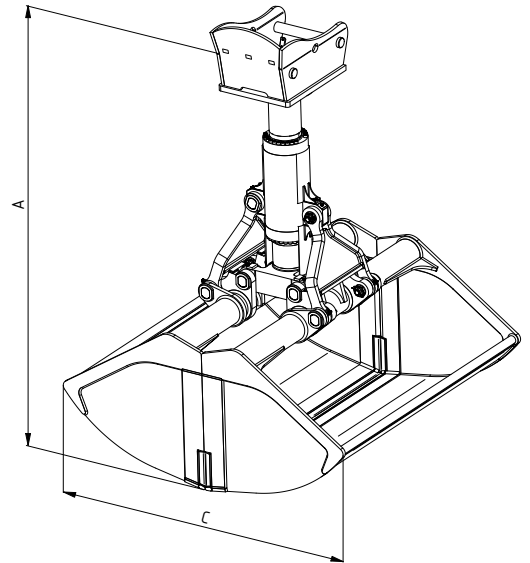
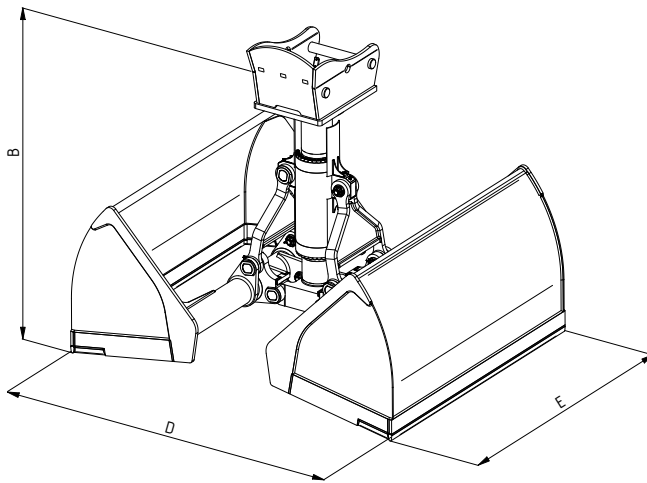


OQC Loading Grab

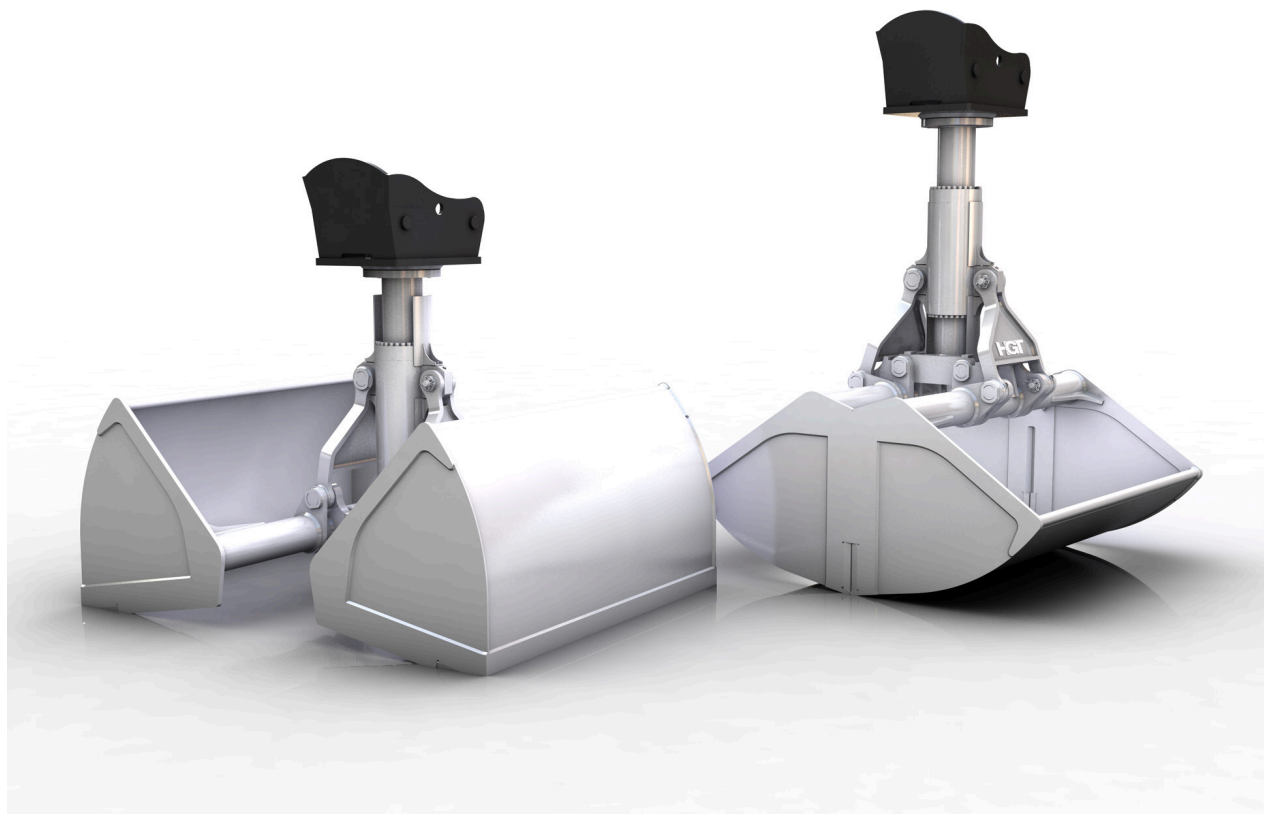
OQC-RCS-P

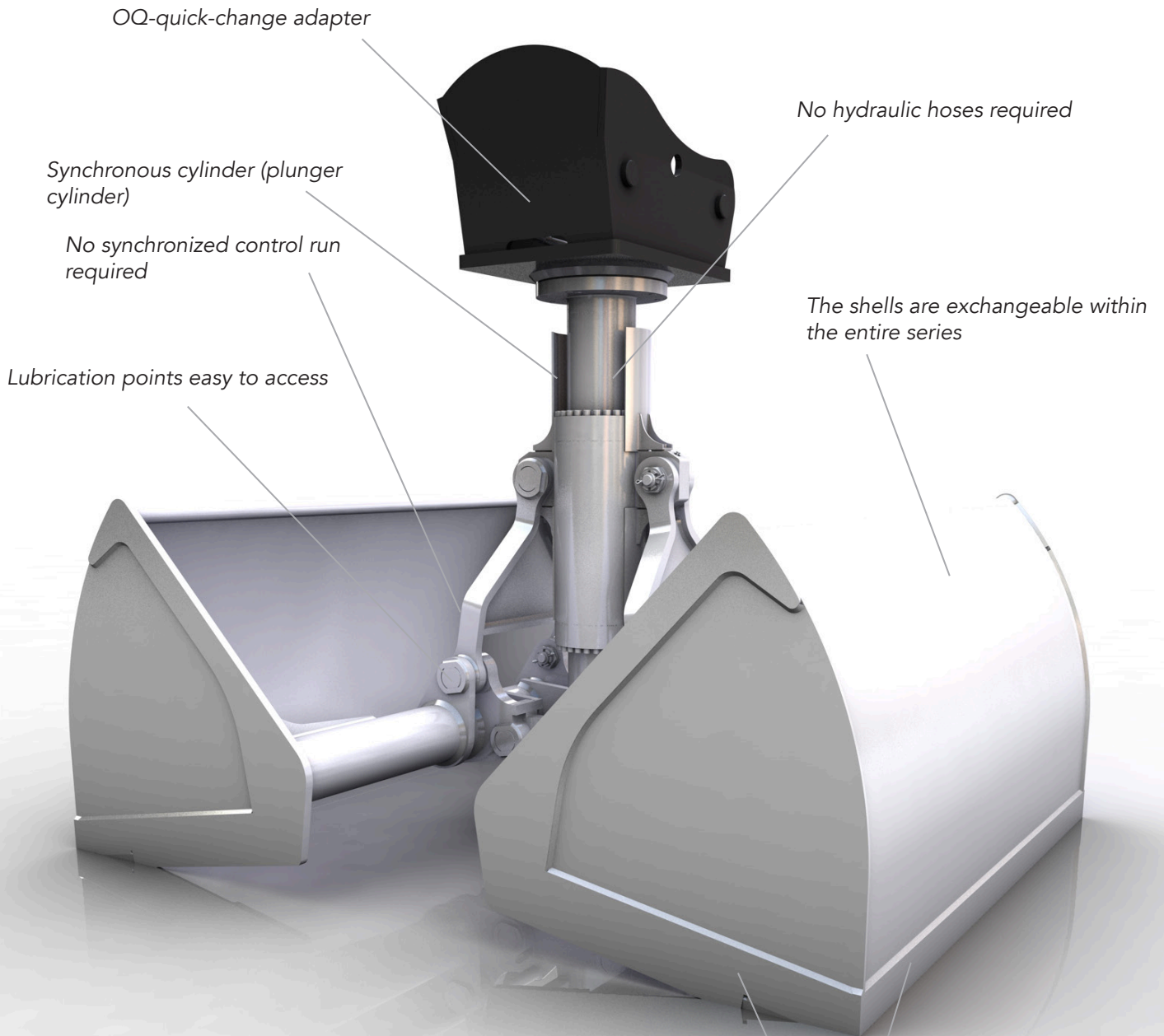
Excavator weight class (t): 25-40
Carrying capacity (t): 6

Operating pressure (bar): 350 grabbing
Bulk weight up to (t/m³): 2.0



Type	Capacity - SAE (l)	Weight (kg)	Dimensions (mm)				
			A	B	C	D	E
OQC-RCSP-5-2500	2500	2228	2650	1931	2070	2482	2000





Side and base edges made of high strength fine-grain steel (HB 450) and with reinforced weld-on profiles (HB 500)

The OQC-RCS-P is equipped with a synchronous cylinder (plunger cylinder) which has a piston rod on both sides of the piston surface. This enables two equally large effective surfaces for extending and retracting. Thus, the volume of hydraulic oil flowing in and out is identical and moves the grab at the same speed equally in both directions. The oil supply is located inside the cylinder, no further hydraulic hoses are needed underneath the DWP15 slewing gear. Possible damage to the hydraulic hoses can therefore be excluded. An absolute synchronisation is guaranteed without any additional mechanical synchronisation guide.