

Series OQC

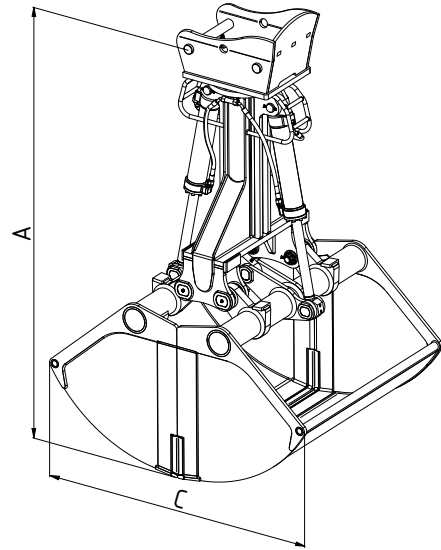
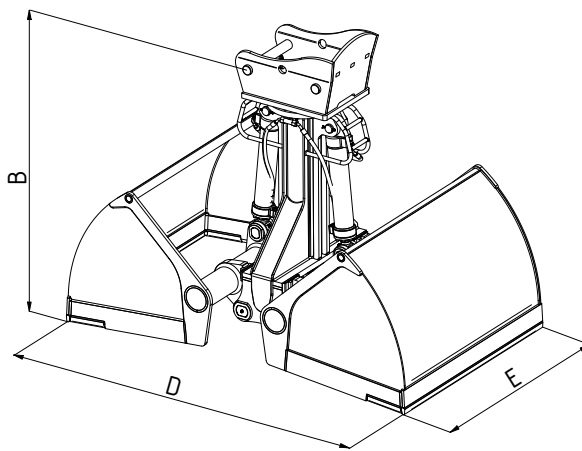


OQC Loading Grab

OQC-RCS5.6

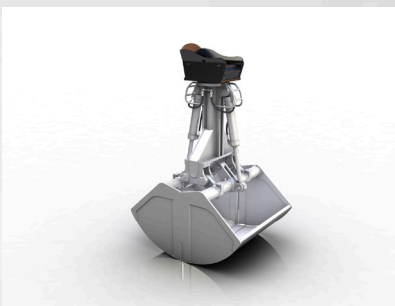
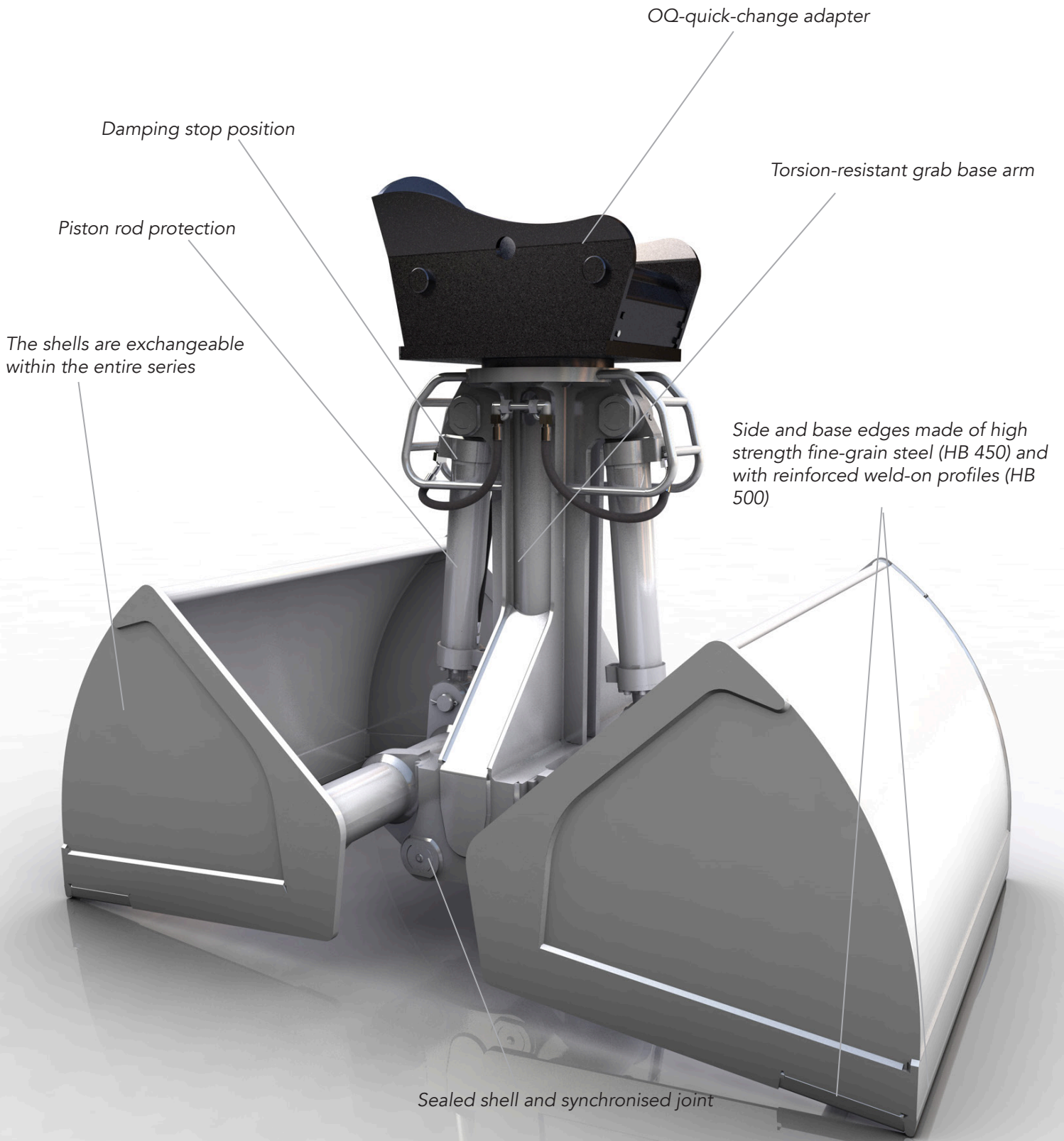
Excavator weight class (t): 30-60
 Carrying capacity (t): 8
 Operating pressure (bar): 350 grabbing

Bulk weight up to (t/m³): 2
 Closing force max. (kN): 105



Type	Capacity - SAE (l)	Weight (kg)	Bulk density up to t/m ³	Dimensions (mm)				
				A	B	C	D	E
OQC-RCS5.6-1500	1500	2078	2.6	2766	1840	1979	2624	1200
OQC-RCS5.6-2000	2000	2253	2.6	2766	1840	1979	2624	1600
OQC-RCS5.6-2500	2500	2428	2.0	2766	1840	1979	2624	2000
OQC-RCS5.6-3000	3000	2752	2.0	2766	1840	1979	2624	2400





Optimized grabs for the transfer of bulk materials such as gravel, sand, pebbles, grain, feed, fertilizer, ore, coal, etc.