

Series RCS and RGF



Two-shell loading grab

RCS4.6

Excavator weight class (t): 20-30

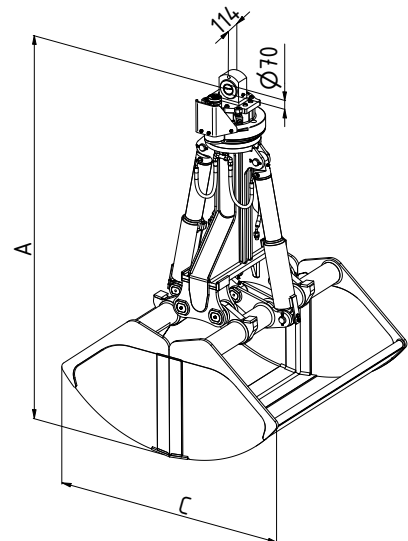
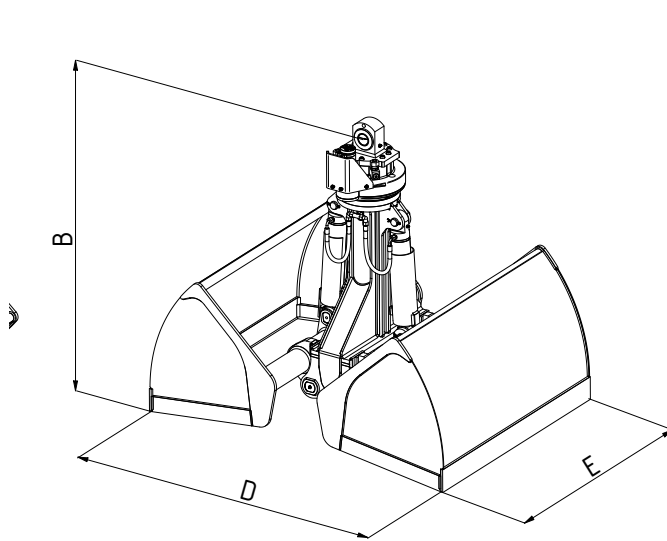
Load bearing capacity (t): Grab: 4 / Slewing gear: 15

Operating pressure (bar): 350 grabbing / 140 slewing

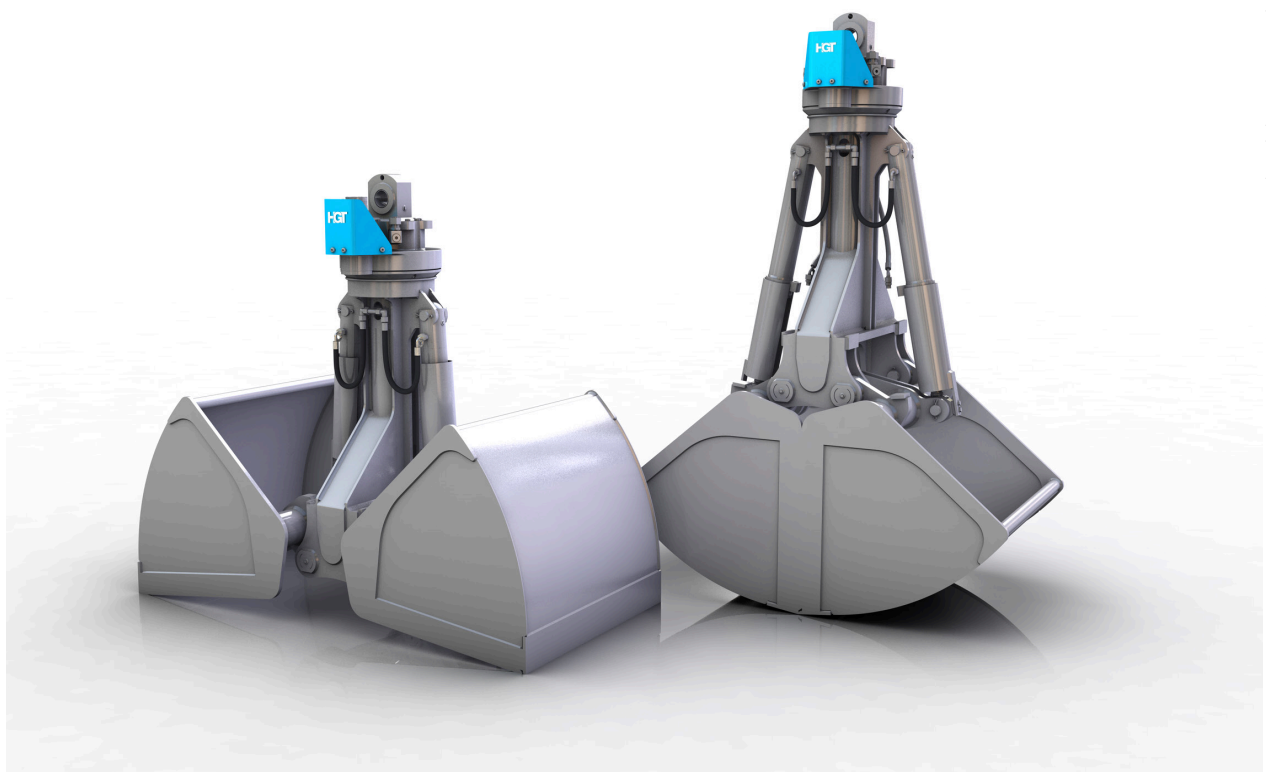
Bulk weight up to (t/m³): 2

Closing force max. (kN): 75

Speed max. (rpm): 15



Type	Capacity - SAE (l)	Bulk weight (t/m ³)	Weight (kg)	Dimensions (mm)				
				A	B	C	D	E
RCS4.6-1000	1000	2.0	1371	2490	1790	1770	2130	1100
RCS4.6-1200	1200	2.0	1472	2490	1790	1770	2130	1400
RCS4.6-1400	1400	2.0	1530	2490	1790	1770	2130	1600
RCS4.6-1600	1600	2.0	1591	2490	1790	1770	2130	1800



Connecting piece for cardanic grab suspension

Hose protection plate to protect the hydraulic connections on the slewing gear

Continuously rotatable hydraulic slewing gear

Cylinder with dampened end position

Torsion-resistant grab base arm

Optional: piston rod protection

Lubrication points easy to access

Side cutters made of high strength fine-grain steel (HB 450)

The shells are exchangeable within the entire series

Sealed shell and synchronised joint

Synchronized control run

Base edges made of rolled wear resistant steel HB 500



Optimized grabs for the transfer of bulk materials such as gravel, sand, pebbles, grain, feed, fertilizer, ore, coal, etc.