

Series RCS and RGF



Two-shell loading grab

RCS7

Excavator weight class (t): 80-165

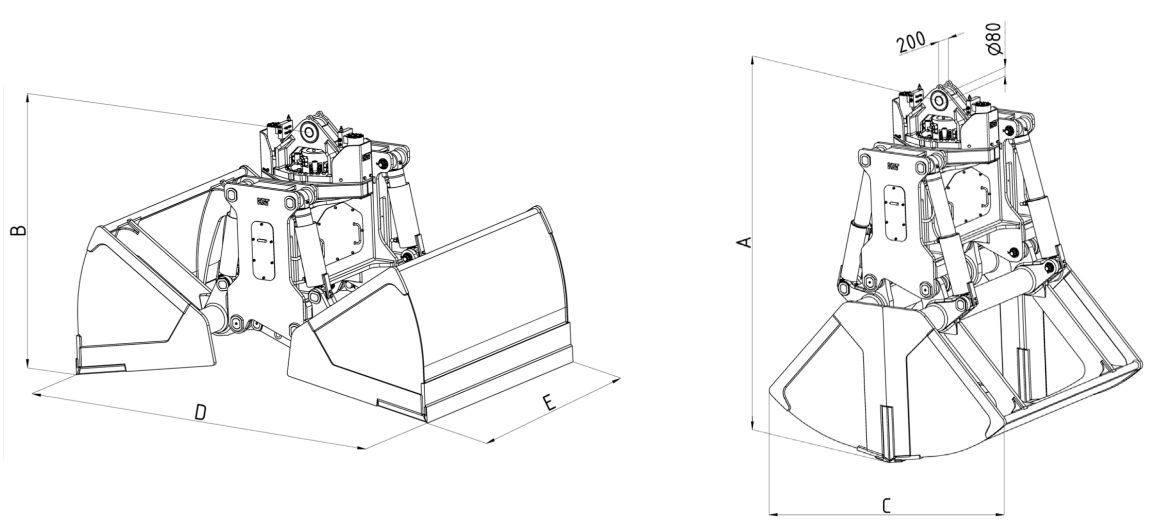
Bulk weight up to (t/m³): 2.0-2.6

Load bearing capacity (t): Grab: 15 / Slewing gear: 40

Closing force max. (kN): 190

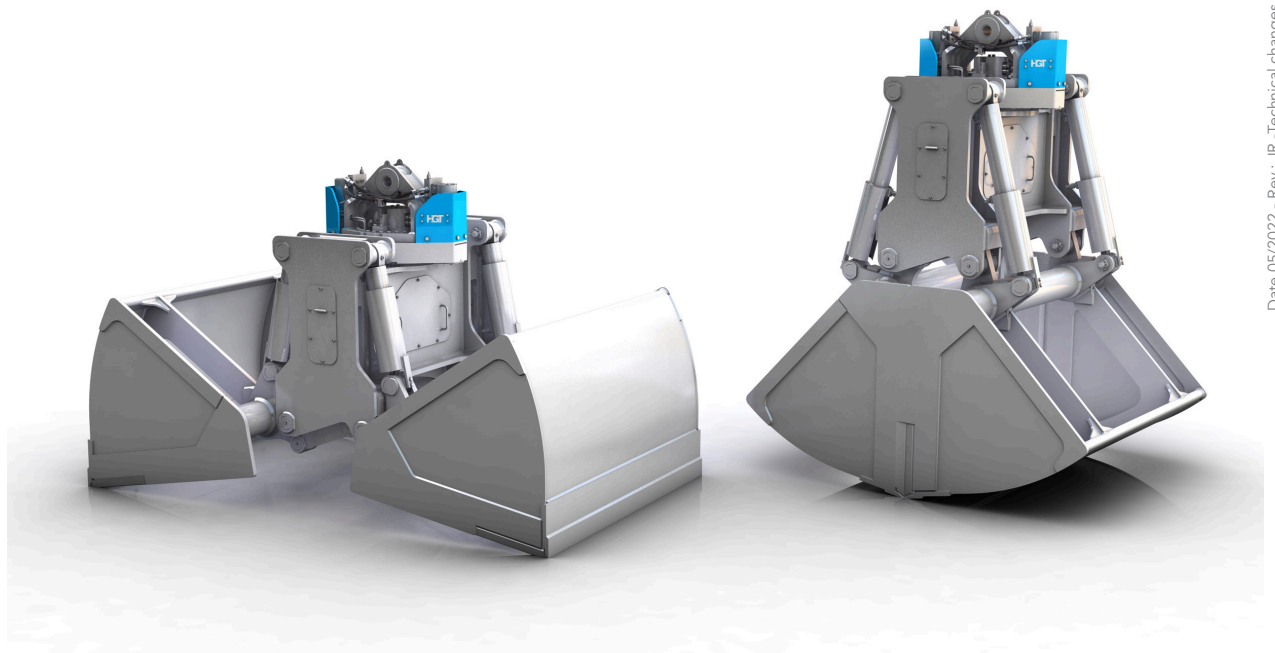
Operating pressure (bar): 350 grabbing / 140 slewing

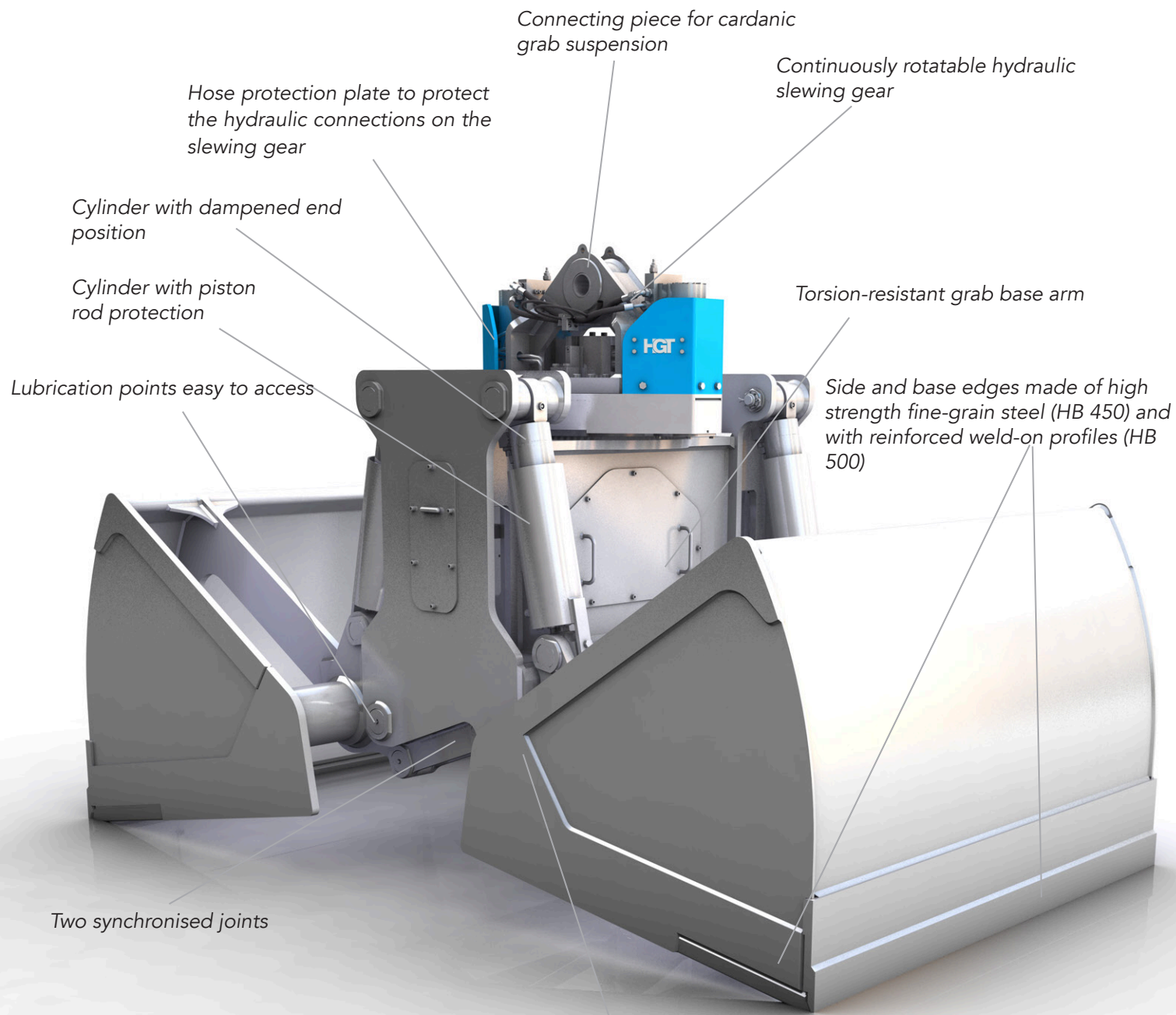
Speed max. (rpm): 8



Type	Capacity - SAE (l)	Bulk weight (t/m ³)	Weight (kg)	Dimensions (mm)				
				A	B	C	D	E
RCS7-5000	5000	2.6	7160	3750	2450	2750	3900	2000
RCS7-6000	6000	2.6	7460	3750	2450	2750	3900	2400
RCS7-7000	7000	2.0	7770	3750	2450	2750	3900	2800
RCS7-8000	8000	1.8	8080	3750	2450	2750	3900	3200

* Other grab options on request





Sealed shell and synchronised joint



Optimized grabs for the transfer of bulk materials such as gravel, sand, pebbles, grain, feed, fertilizer, ore, coal, etc.