

Series RCS and RGF



Two-shell loading grab

RGF7-L

Excavator weight class (t): 120-250

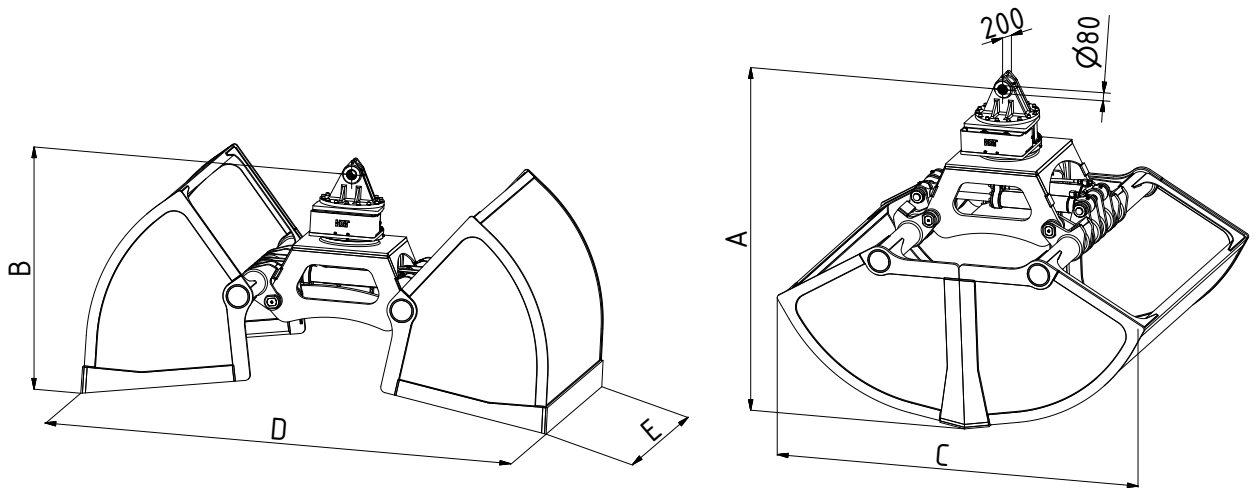
Bulk weight up to (t/m³): 1.2

Load bearing capacity (t): Grab: 18 / Slewing gear: 35

Closing force max. (kN): 134

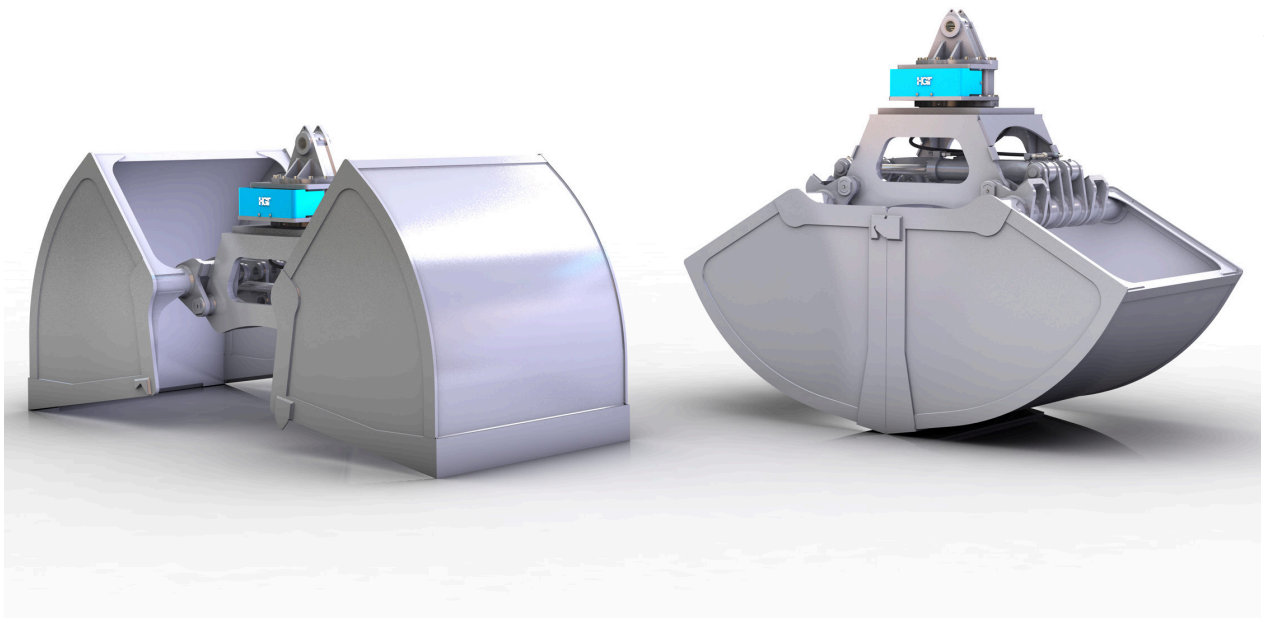
Operating pressure (bar): 350 grabbing / 140 slewing

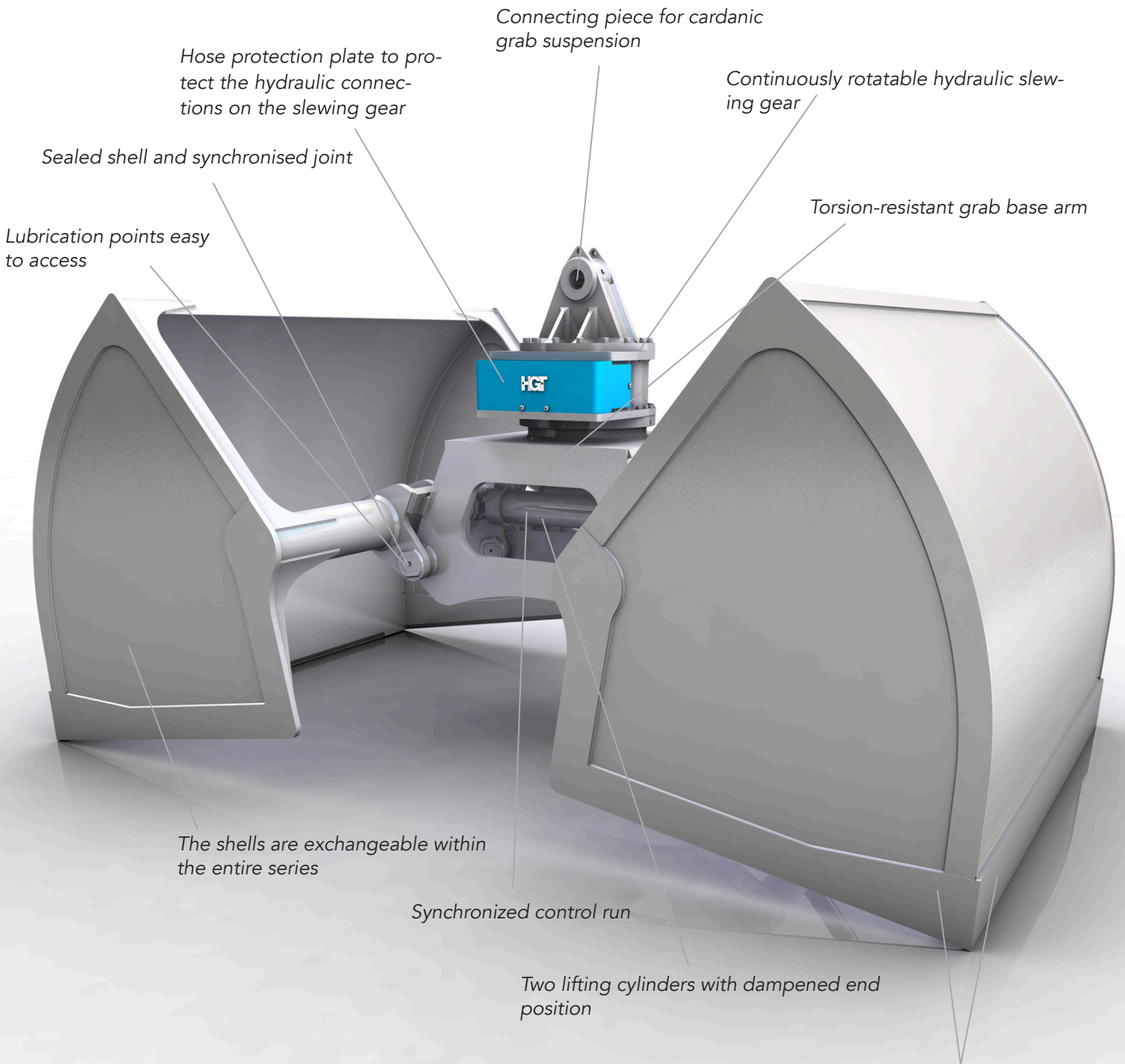
Speed max. (rpm): 8



Type	Capacity - SAE (l)	Bulk weight (t/m ³)	Weight (kg)	Dimensions (mm)				
				A	B	C	D	E
RGF7-6000-L	6000	1.2	4103	2916	2057	3656	4426	1400
RGF7-8000-L	8000	1.2	4408	2916	2057	3656	4426	1900
RGF7-10000-L	10000	1.2	4705	2916	2057	3656	4426	2300
RGF7-12000-L	12000	1.2	5094	2916	2057	3656	4426	2800

* Other grab options on request





Side and base edges made of high strength fine-grain steel (HB 450) and with reinforced weld-on profiles (HB 500)



Optimised grab for running light goods such as light granulate, grain, feed, fertilizer.